

Clint™

Audio



MODEL: F1 + F2

Instruction Manual

English

Instruction Manual

MODEL: **F1+F2**

Internet/DAB/FM Radio table style series

F1





F2



MODEL: F1+F2 (FREYA ONE/TWO)

CAUTION

TO PREVENT FIRE OR SHOCK HAZARD, DO NOT USE THIS PLUG WITH AN EXTENSION CORD, RECEPTACLE OR OTHER OUTLET UNLESS THE BLADES CAN BE FULLY INSERTED TO PREVENT BLADE EXPOSURE. TO PREVENT FIRE OR SHOCK HAZARD, DO NOT EXPOSE THIS APPLIANCE TO RAIN OR MOISTURE.

 <p>The lightning flash with arrowhead symbol, within an equilateral triangle is intended to alert the user to the presence of insulated 'dangerous voltage' within the product's enclosure that may be of sufficient magnitude to constitute a risk of electric shock to persons.</p>	<div data-bbox="630 548 941 667"> <p>CAUTION RISK OF ELECTRIC SHOCK DO NOT OPEN</p> </div> <p>WARNING:</p> <p>To reduce the risk of electric shock, do not remove cover (or back). No user serviceable parts are inside. Refer servicing to qualified personnel.</p>	 <p>The exclamation point within an equilateral triangle is intended to alert the user to the presence of important operating and maintenance (servicing) instructions in the literature accompanying the appliance.</p>
---	--	---

IMPORTANT SAFETY INSTRUCTIONS

- 1.) Read these instructions.
- 2.) Keep these instructions.
- 3.) Heed all warnings.
- 4.) Follow all instructions.
- 5.) Do not use this apparatus near water.
- 6.) Clean only with dry cloth.
- 7.) Do not block any ventilation openings. Install in accordance with the manufacturer's instructions.
- 8.) Do not install near any heat sources such as radiators, heat registers, stoves, or other apparatus (including amplifiers) that produce heat.
- 9.) Protect the power cord from being walked on or pinched particularly at plugs, convenience receptacles, and the point where they exit from the apparatus.
- 10.) Only use attachments / accessories specified by the manufacturer.
- 11.) Unplug this apparatus during lightning storms or when unused for long periods of time.
- 12.) Refer all servicing to qualified service personnel. Servicing is required when the apparatus has been damaged in any way, such as power-supply cord or plug is damaged, liquid has been spilled or objects have fallen into the apparatus, the apparatus has been exposed to rain or moisture, does not operate normally, or has been dropped.
- 13.) This appliance shall not be exposed to dripping or splashing water and no object filled with liquids such as vases shall be placed on the apparatus.
- 14.) Do not overload wall outlet. Use only power source as indicated.
- 15.) Use replacement parts as specified by the manufacturer.

Welcome

Thank you for purchasing Clint™ F1(F2). Your F1(F2) is designed to provide you with hours of music enjoyment with simple, convenient access to thousands of Internet radio stations worldwide and furthermore with DAB/FM and music streaming options. No matter whether you are in Bradford and want to listen to Brazilian music, or select a genre such as classical music, hard rock or jazz, the F1(F2) brings you home the radio station of your choice.

Table of contents

1. Content of package.....	Page 4
2. Before you start	Page 5
2.1 Difference between the Internet Radio Portal and Radio Station.....	Page 5
3. Overview of F1(F2)	Page 6
3.1 Front panel	Page 6
3.2 Back panel.....	Page 7
4. General menu navigation / Menu Structure	Page 7
5. Turning on F1(F2)	Page 9
6. Setting up the F1(F2) (Quick Guide)	Page 9
6.1 Wizard	Page 9
6.2 Manual Configuration	Page 10
6.3 View Settings.....	Page 10
6.4 Using the F1(F2)	Page 11
7. Setting the time and date.....	Page 11
7.1 To set the time manually	Page 11
7.2 Set clock	Page 11
7.3 Set date	Page 12
7.4 Auto update	Page 12
7.5 Set 12/24 Hour	Page 12
7.6 Set sleep	Page 12
7.7 Set alarms.....	Page 12
7.7.1 Modes	Page 13
7.7.2 Last Listened.....	Page 13
7.7.3 Volume.....	Page 13
7.7.4 Save	Page 13
8. Setting up the music player	Page 14
8.1 Enter the music player	Page 16
9. The Main Menu.....	Page 19
9.1 Internet Radio	Page 20
9.2 Music Player.....	Page 20
9.3 DAB	Page 20
9.4 FM	Page 20
10. System Setup (Step by step)	Page 20
10.1 Wizard.....	Page 21
10.2 PC Settings	Page 21
10.3 View Settings	Page 22
10.3.1 Active Adapter	Page 22
10.3.2 MAC Address	Page 22
10.3.3 DHCP.....	Page 22
10.3.4 PC Settings	Page 22
10.3.5 SSID	Page 22
10.4 IP Settings.....	Page 22

10.4.1 IP Address.....	Page 23
10.4.2 Subnet Mask	Page 23
10.4.3 Gateway Address	Page 23
10.4.4 Primary DNS.....	Page 23
10.4.5 Secondary DNS.....	Page 23
10.5 Manual Settings.....	Page 23
10.5.1 DHCP Enable	Page 23
10.5.2 DHCP Disable	Page 24
10.6 Time Setup	Page 26
10.7 Factory Reset	Page 26
10.8 Software Upgrade	Page 26
10.9 Info.....	Page 27
10.9.1 Adding favourites and stations.....	Page 27
11. Using Internet Radio	Page 28
12. Using DAB Radio.....	Page 31
13. Using FM Radio.....	Page 33
14. Presets.....	Page 34
15. Info and Error Messages.....	Page 35
16. Troubleshooting – connecting to an internet station	Page 36
17. FAQ	Page 37

1. Content of package

Please make sure that the following contents are included in the package:

1. F1(F2) Digital Media Player Main unit
2. Power supply
3. F1(F2) User Manual
4. F1(F2) Multi lingual User guides



2. Before you start

Before you can use your internet radio, you need the following:

1. A broadband internet connection.
2. A wireless access point connected to your broadband internet. Via a router is recommended.
3. If your wireless network is configured to use WEP (Wired Equivalent Privacy) or WPA (Wi-Fi Protected Access) data encryption, it is important that you know your WEP or WPA code to connect to your network.
4. PC
 - Windows Media Player (WMP) 11 can be set up to enable streaming music files from the PC to the radio.
 - Alternatively, Windows shared folders can be used if WMP is not installed in the PC.
 - The PC can also be used to customise the radio's favourites via the Frontier Silicon internet radio portal.



2.1 Difference between the Internet Radio Portal and Radio Station

There might be some confusion with regards to the difference between the Internet radio portal and the actual internet radio stations.

...it's all about listening

Internet Radio Portal The portal is the content aggregator which maintains links to all the available internet radio stations. It can be considered to

be an 'address book', listing the address of all the internet radio stations and regularly updated with new ones. When a user navigates through the radio menus, the list of stations is returned by the Portal. The portal used is <http://www.wifiradio-frontier.com>

Internet Radio Station The station is the actual website which contains the selected station audio stream. Once a user has selected a station through the Portal, the radio then connects directly to the station.

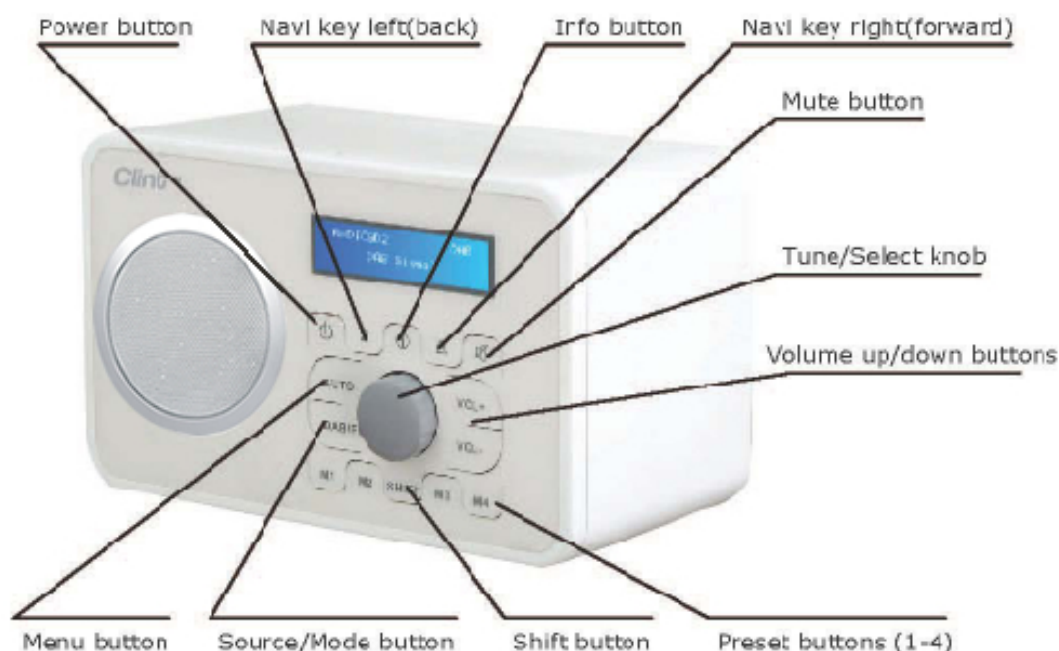
Depending on your wireless router the internet radio should work anywhere within *up to* 20-30 meters of the wireless access point.

Before continuing, make sure that your wireless access point is turned on and connected to your broadband internet. Please refer to your wireless access point manual to get this part working.

3. Overview of your F1(F2)

After taking your F1(F2) out of the package, please spend some time to familiarize yourself with its features.

3.1 Front Panel



VOL = By pressing VOLUME buttons Volume level is set. By Pressing Mute button MUTE is activated/deactivated.

TUNE/Select = By turning TUNE knob users can navigate through menus. By pressing TUNE knob(Select) user confirms choice.

MENU = By pressing MENU the CONTEXT Menu of the current mode is displayed.

INFO = Displays the different INFO in current mode.

SHIFT = By pressing SHIFT preset buttons will change from 1-4 to 5-8. For example pressing shift and then long pressing PRESET 2 will save PRESET on preset 6.

← = Pressing ARROW left will navigate back in the menus.

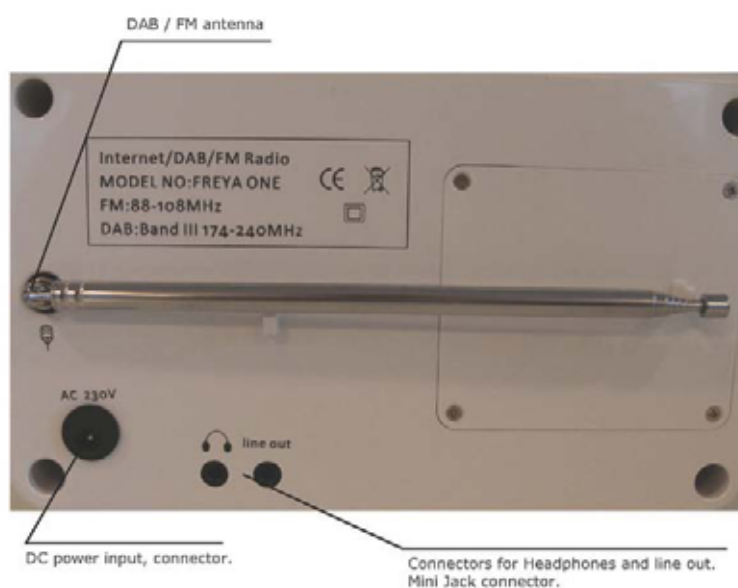
→ = Pressing ARROW right will navigate forward in the menus.

SOURCE(Mode) = By pressing SOURCE the F1(F2) will change between the different modes: Internet Radio, Music Player, DAB & FM.

1 – 4 = Preset buttons for saving favourite stations (Internet Radio, DAB or FM)

POWER = Turns F1(F2) on/off

3.2 Back Panel



4. General menu navigation / Menu Structure

The Wi-Fi radio features three types of menu. These are:

- The **Main menu**
This is the top level menu which allows users to enter the different modes, setup the radio, and view information about the radio (for example software version, product ID).
- The **Internet Radio Station List menu**
This is the menu that allows users to access the different internet radio services. This menu comes direct from the Internet Radio portal.

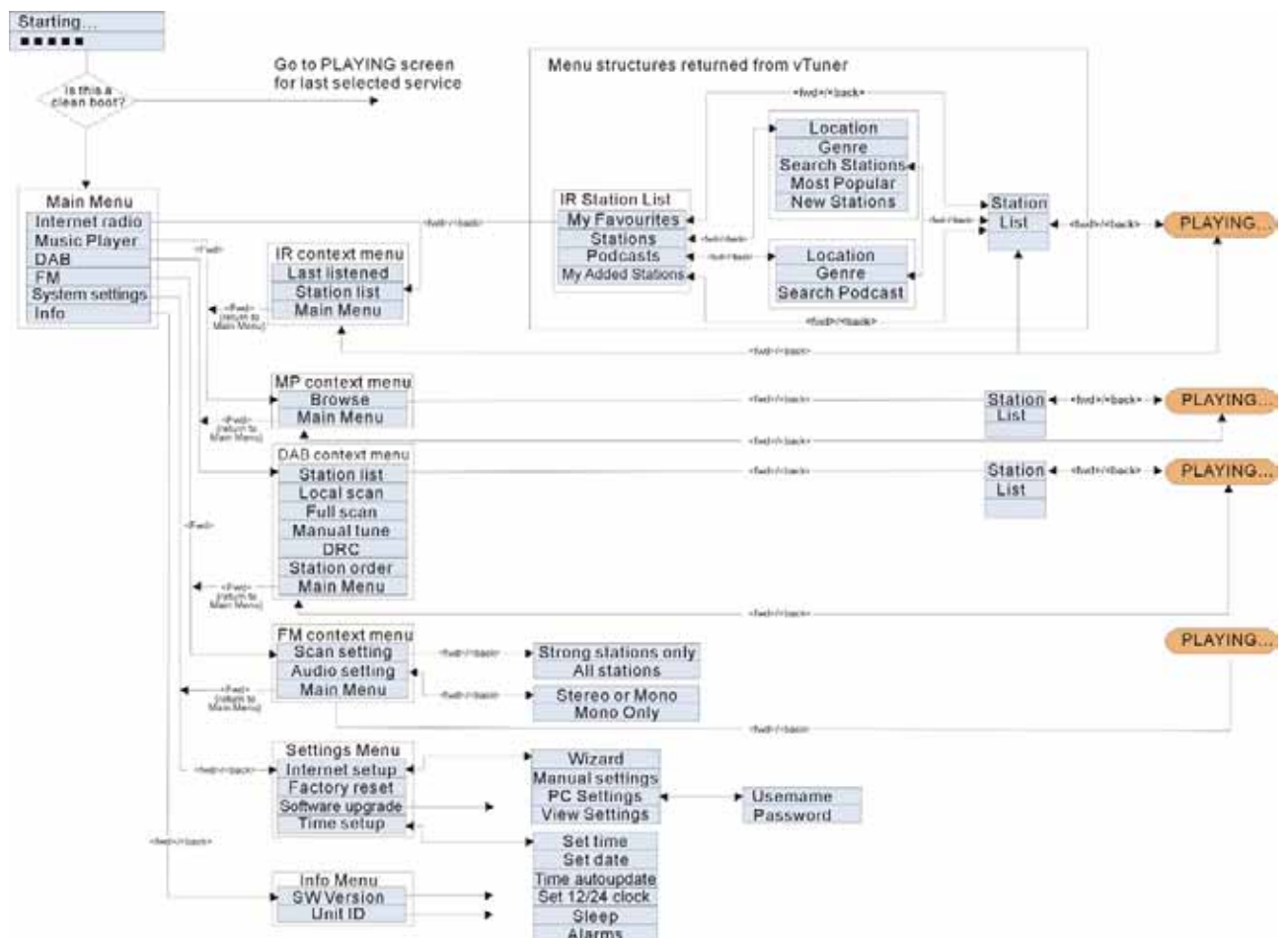
- The **Mode menus** for the various modes
The *mode* menus are so called because they show the functions available within the context of each of the modes. Pressing the MENU button anytime will take you the *mode* menu of the relevant mode the radio is currently in. Each context menu provides an entry called *main* menu which takes you back to the MAIN menu.

To navigate to the different menus you must use the ARROW buttons on the front panel and the TUNE knob. This is general for all menu items. Use ARROW keys to find the menu you wish to select and turn the TUNE knob to navigate to the desired menu item. Then press TUNE knob to select. When menu item is selected pressing right ARROW key will also confirm selection.

For example to navigate to the MAIN MENU while in INTERNET RADIO MODE press left ARROW button and the Menu is showing on display. Turn the TUNE knob until MAIN MENU is selected. Press TUNE knob to select MAIN MENU.

Pressing MENU on front panel will take you to the Context Menu of the present mode of F1(F2) (Internet, DAB etc.)

Menu Structure:



F1(F2) has numerous features which require a small degree of setup before users are able to fully use all the functionalities of the radio. The Main Menu → System Setup menu has a series of options that allow system-wide settings to be altered.

These settings are:

Setting	Action
Internet setup	Enter the Internet Settings submenu
Time setup	Enter the Time/Alarm setup submenu
Language	Enter Language Setup
Software upgrade	Enter the Software Upgrade wizard
Factory reset	Performs a factory reset

Please go to page 21 for System Menu (Step by Step).

5. Turning on F1(F2)

Preparing F1(F2) for operation:

1. Place F1(F2) on a flat surface.
2. Connect power cable and turn on the radio.

6. Setting up the F1(F2) (Quick Guide)

The first time you want to connect to the internet to listen to radio stations, you will have to set up the connection. This is done with the Internet Wizard. The radio has been configured to automatically run the Internet Wizard when you enter the Internet Radio mode (If a connection has not already been made).

Alternatively you can manually run the Internet Wizard if you want to connect to a different WiFi network. This can be accessed from the System Setup → Internet Setup menu in the MAIN MENU.

The Internet Setup menu consists of 4 options:

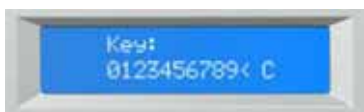
Wizard, PC Settings, View Settings and Manual Settings.

6.1 Wizard:

1. Select the Wizard.
2. The Wizard will then automatically scan for available Wireless networks and a list is displayed.
3. Turn the TUNE knob to either select desired network (SSID) or select one of the two other options. Rescan (Performs a rescan for networks) or Manual Configuration (Will allow user to manually configure the Wireless setup).
4. If the network has no security the following messages appears – "Please wait Connecting", "Please wait Acquiring address" and "Connected" The Internet Radio menu will be displayed.
5. If the network has a security feature enabled the F1(F2) will prompt you to enter the key or pass phrase. The security details must match the security information configured in the wireless access point. The authentication type (WEP, Open, WPA or WPA2) will automatically be detected.

6. Password Entry:

Turn the TUNE knob to display different sets of characters and numbers. Use the ARROW buttons to move the flashing cursor to select the desired characters.



When entering key or pass phrase:

The "<" symbol = Delete last character

The "←" symbol = Enter

The "C" symbol = Cancel

6.2 Manual Configuration (Not recommended)

More advanced users can also edit their WiFi settings by selecting the System Setup → Internet Setup → Manual Settings menu.

Selecting Manual Settings allows you to manually configure your network. First choose between Wired (Optional) or Wireless. Press TUNE knob to confirm. Then choose between DHCP enable or disable.

Choose enable if you want DHCP to automatically acquire an IP address. Press TUNE knob to confirm. Enter SSID (Same procedure as explained above (6)). Turn TUNE knob to choose between authentication type (Open, WEP, WPA or WPA2). Press TUNE knob to confirm. Turn TUNE knob to choose between Open or PSK. Press TUNE knob to confirm. Enter security key or pass phrase as explained above (6). Display will show "Please wait Connecting", "Please wait Acquiring address" and "Connected" The Internet Radio menu will be displayed.

Choose disable if you want to manually enter IP address etc. Press TUNE knob to confirm. Enter IP address by turning the TUNE knob to desired number. Use ARROW buttons to choose next or previous number. Press TUNE knob to confirm. Enter Subnet mask. Press TUNE knob to confirm. Enter Gateway address. Press TUNE knob to confirm. Enter Primary DNS. Press TUNE knob to confirm. Enter Secondary DNS. Press TUNE knob to confirm. Enter SSID. Choose "←" to confirm. Choose between Open, WEP, WPA or WPA2. Press TUNE knob to confirm. Choose between Open or PSK (For WEP), TKIP or AES (For WPA, WPA2). Press TUNE knob to confirm. Enter security key or pass phrase as explained above (6). Display will show "Please wait Connecting", "Please wait Acquiring address" and "Connected" The Internet Radio menu will be displayed.

6.3 View settings

Selecting View Settings allows you to view your settings. The menu items are:

Active Adapter (Display the current connection being used to connect to the internet)

MAC Address (Displays the F1(F2) MAC Address)

SSID (Displays the current SSID)

DHCP (Displays the current DHCP setting)

PC Setting (Display User Name or Password)

IP Settings (Displays current IP Address, Subnet Mask, Gateway Address, Primary DNS or Secondary DNS)

6.4 Using the F1(F2)

On power up the F1(F2) accesses the last mode or service is selected. To access another mode:

1. Press Menu button on front panel to display Context menu of the mode you are in.
2. Turn the TUNE knob to select Main Menu. Press TUNE knob to confirm.
3. Turn TUNE knob to choose desired mode.

The F1(F2) accesses the last service played in that mode.

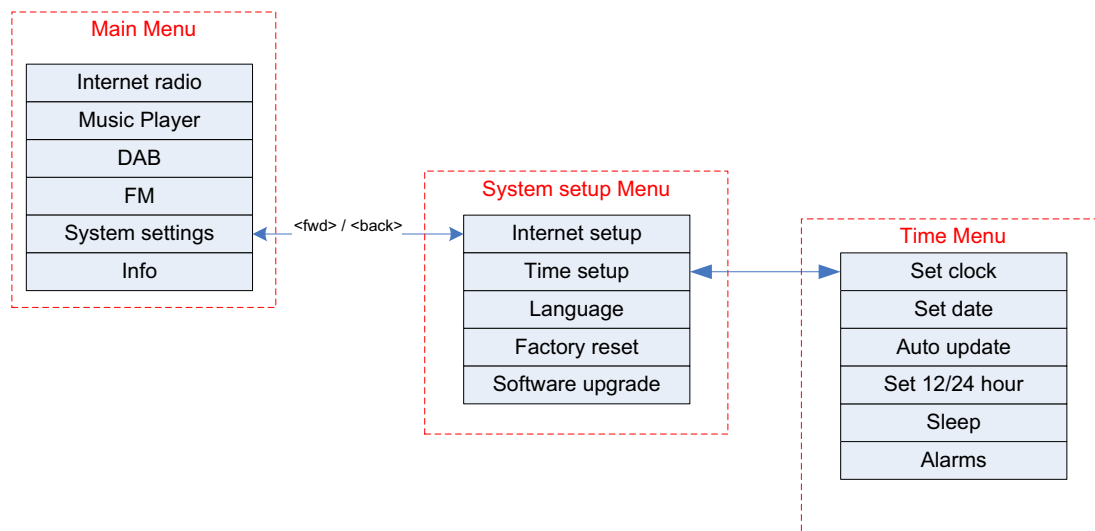
7. Setting the time and date

The time and date must be set manually each time main power has been switched off (Alternatively you can tune into a DAB station and (if available) time and date can be extracted from the DAB stream) (Recommended).

7.1 To set the time manually:

Go to MAIN MENU → SYSTEM SETUP → TIME SETUP

Choose to either SET CLOCK, SET DATE, AUTO UPDATE, SET 12/24 Hour, SLEEP or ALARM



7.2 Set Clock:

Select Set Clock. Turn TUNE knob to set hour. Press right ARROW button to select minutes. Turn TUNE knob to set minutes. Use ARROW keys to choose between hours and minutes. Press TUNE knob to confirm settings.

7.3 Set Date:

Select Set Date. Turn TUNE knob to set year. Press right ARROW button to select month. Turn TUNE knob to set month. Press right ARROW button to select day. Turn TUNE knob to set day. Use ARROW keys to choose between year, month and day. Press TUNE knob to confirm settings.

7.4 Auto Update:

Select Auto update. Turn TUNE knob to choose between Update from DAB or No Update. When selected press TUNE knob to confirm setting. When Update from DAB is selected you can tune into a DAB station and (if available) time and date can be extracted from the DAB stream.

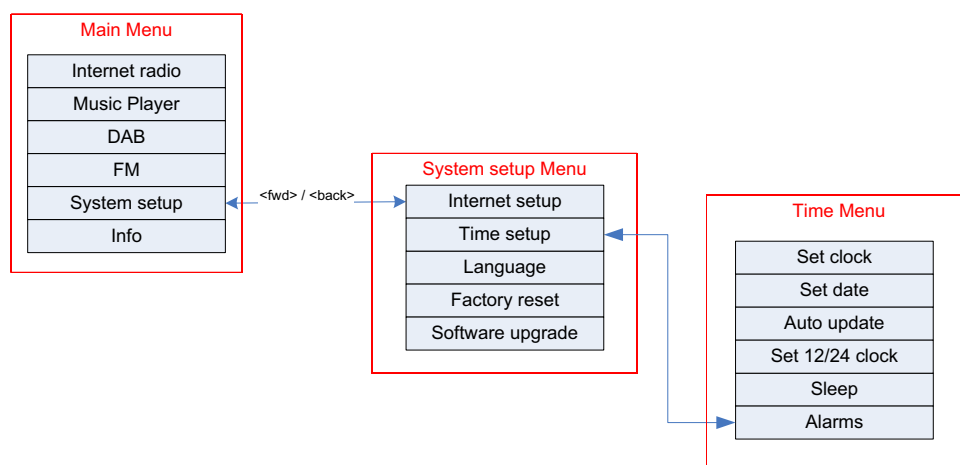
7.5 Set 12/24 Hour:

Select Set 12/24 Hour. Turn TUNE knob to choose between Set 12 Hour or Set 24 Hour. When selected press TUNE knob to confirm setting.

7.6 Set Sleep:

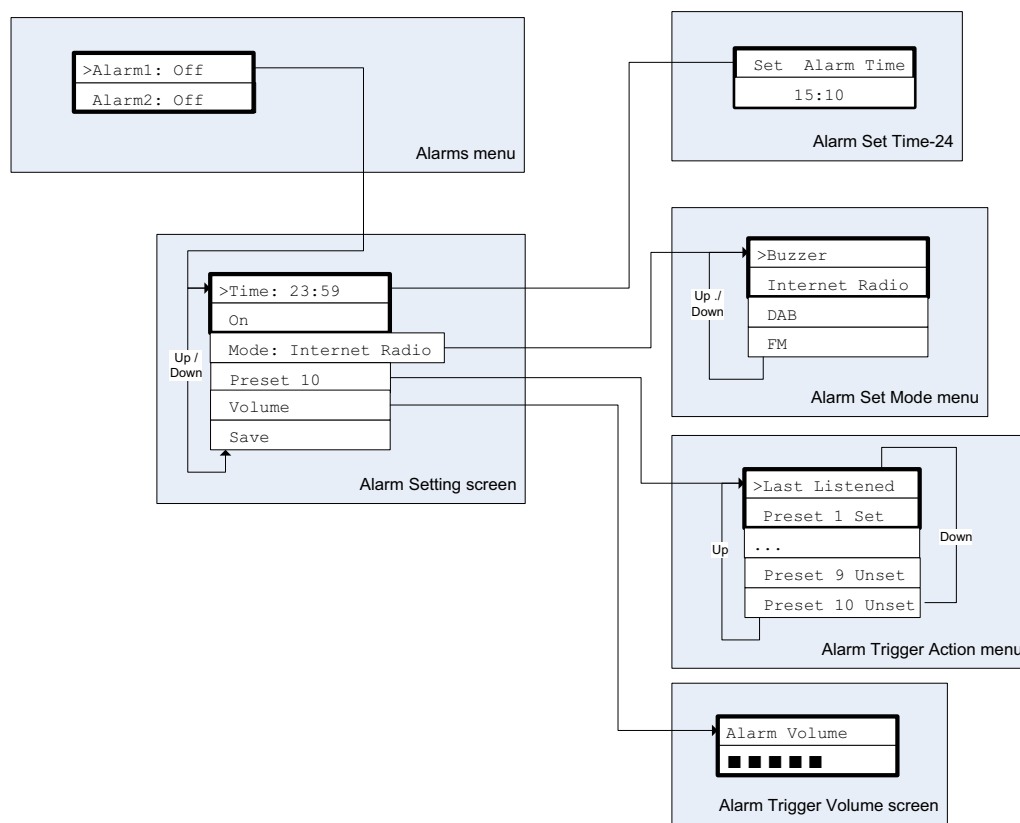
Select Sleep. Turn TUNE knob to choose between No Sleep, 15, 30, 45 or 60 minutes. Press TUNE knob to confirm. The F1(F2) will turn off automatically after the desired amount of minutes.

7.7 Set Alarms:



Select Alarms. Turn TUNE knob to choose from Alarm 1 or 2. Press TUNE knob to confirm. Press TUNE knob to choose between Time, Off, Mode, Last listened, Volume and Save. Select Time by pressing TUNE knob. Turn TUNE knob to set Hour. Press right ARROW button to choose minutes. Turn TUNE knob to set minutes. Use ARROW keys to choose between hours and minutes. Press TUNE knob to confirm settings.

Other settings can be selected by turning TUNE knob and pressing TUNE knob to select.



7.7.1 Modes:

Internet Radio, DAB, FM or Buzzer

7.7.2 Last Listened:

Selecting Last Listened will also include all Presets to be chosen.

7.7.3 Volume:

Turn TUNE knob to set ALARM volume.

7.7.4 Save:

When all settings are as desired. Select SAVE and press TUNE knob to confirm. ALARM will activate even if F1(F2) is playing. However if playing mode and alarm mode are the same there will only be a short break when alarm enters mode. When POWER button is turned off and ALARM is set display shows a Bell in upper right corner.

8. Setting up the music player (Streaming music from a PC to the radio):

There are two Music Player modes available. Each of them requires different settings, and either one can be used to playback music from a media server.

Option 1) Shared folders (CIFS)

In order to set up the device to playback music stored on shared network drives, user name, password and domain settings must be configured to work with the PC share settings. This is only required if the user has set a password on his/her shared folders.

Step 1) PC : Domain/Workgroup configuration

The Domain configuration item can be found on a Windows XP machine as follows:

1. From the start menu, select Control Panel > System then select the Computer Name tab.
2. The Domain or Workgroup that this Computer is a member of is displayed in this tab.
3. If the PC is not a member of any Domain or Workgroup then one must be joined. To do this click on the change button on the computer name tab and enter the name of the domain (default on Windows XP is MSHOME).
4. A reboot of the PC may be prompted if the Domain or Workgroup has been changed.

Step 2) PC : Setting up a new user account (Windows XP)

If you wish, you can access more than one PC from the radio. The Wi-Fi Radio requires a user account to be set up on each PC that you wish to browse. By default most PCs have at least one user account associated with it. The user name and password (optional) needs to be the same on each PC as the Internet Radio only stores one user name and one password. For windows XP this can be set up as follows:

1. From the start menu, select Control Panel -> User accounts
2. From this screen left click the '**Add ...**', and enter the new user name and the Domain/Workgroup setting noted above. Select the type of user (restricted) and then select finish.
3. Select the user just created, select '**Reset Password ...**' and enter a password for this user.
4. Note the User Name and Password.

Note for Windows VISTA: Users have to turn on the Guest account via manage user accounts in the control panel in VISTA, then add access to either 'Everyone' or 'Guest' on the shared drive. They could create a new account for the internet radio, with a password, if they are concerned about security. The Guest account has no password by default, so the Wi-Fi radio will connect to it from its factory default settings.

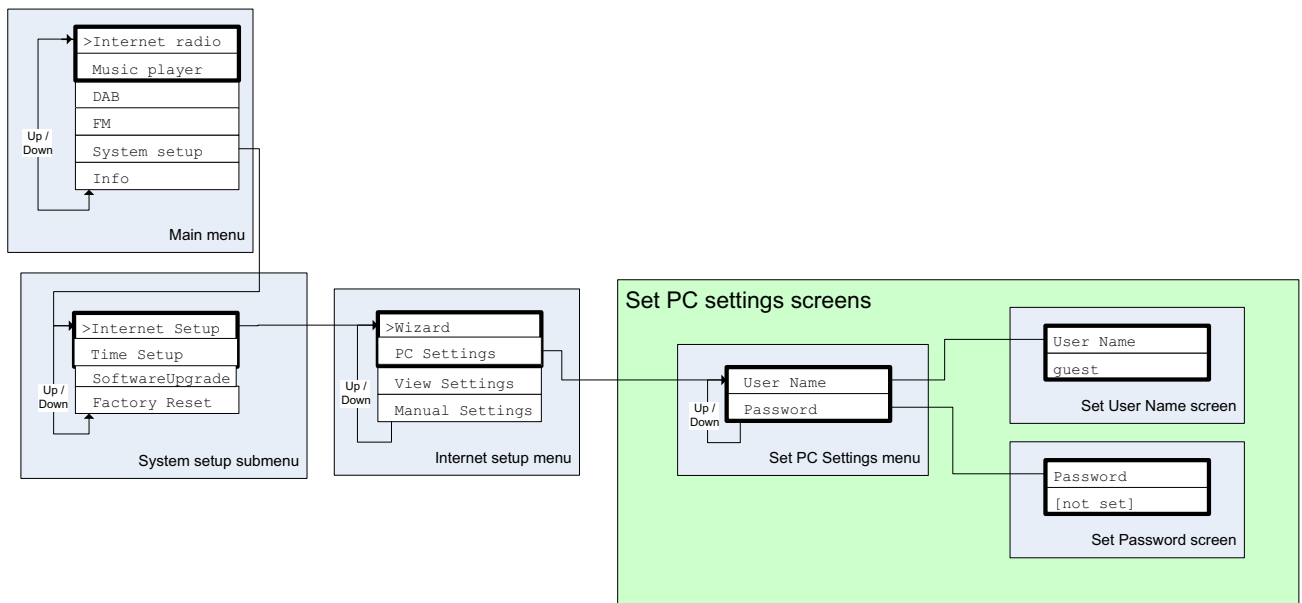
Step 3) PC : Configuring a shared drive

From the Start menu select My Computer and navigate to the directory you wish to share. Right click on the directory and select Sharing and Security. Configure the shared drive as read only, and ensure that the User Name created above has read access to the share.

Step 4) Wi-Fi Radio : Storing the username and password

Before the radio can stream music from a PC, you need to ensure you have shared folder available on the PC, and set up the radio so that it knows the username and password (if one has been set) for the shared folder on the PC.

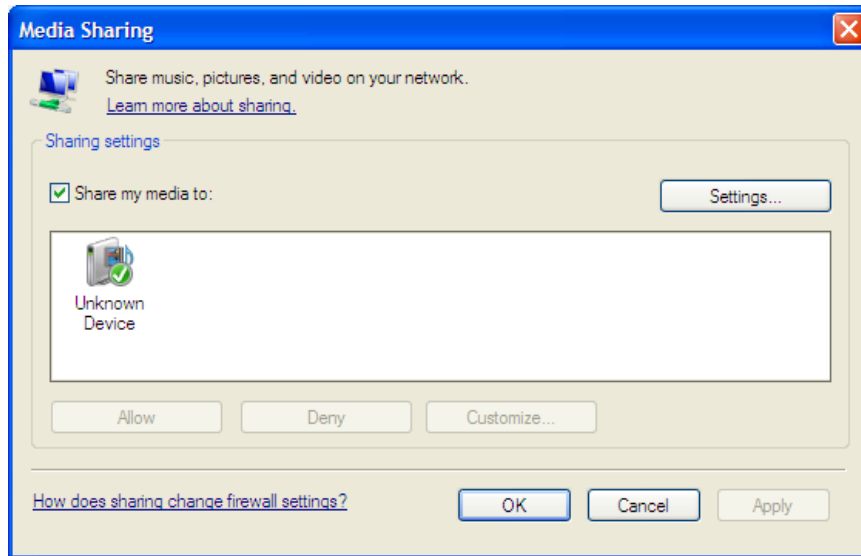
This can be set up using the *PC settings* menu shown below:



Option 2) Shared media (UPnP)

Media sharing uses Windows Media Player (WMP) 11 and above as media server. This mode does not require any setting in the radio, but the PC needs to be configured to allow the radio access to the media. You will only have to do it once, following the next steps.

1. The PC must be connected to network (wired or wireless) that will be used to share media with the radio.
2. Ensure that the radio is powered on and connected to the same network as the PC.
3. In WMP, add to the media library the audio files and folders you want to share with your internet radio (in Library > Add to library).
4. In the WMP main window, click on Library, then Media sharing. The following window appears:



WMP media sharing window. The radio is shown as Unknown Device

The Internet radio is presented as an "Unknown Device". Make sure that the device has access to the shared media by selecting it and clicking <Allow>. Then click <OK>. The PC is now ready to stream the music to the radio.

8.1 Enter the music player:

Go to MAIN MENU → Music Player

With Music Player selected turn TUNE knob to choose between (If available) workgroups. Press TUNE knob to confirm. Turn TUNE knob to choose between (If available) shared folders on the network. Press TUNE knob to confirm. Browse to the shared folder with music content. Press TUNE knob to confirm. Turn TUNE knob to choose between the shared music files. Press TUNE knob to play selected file.

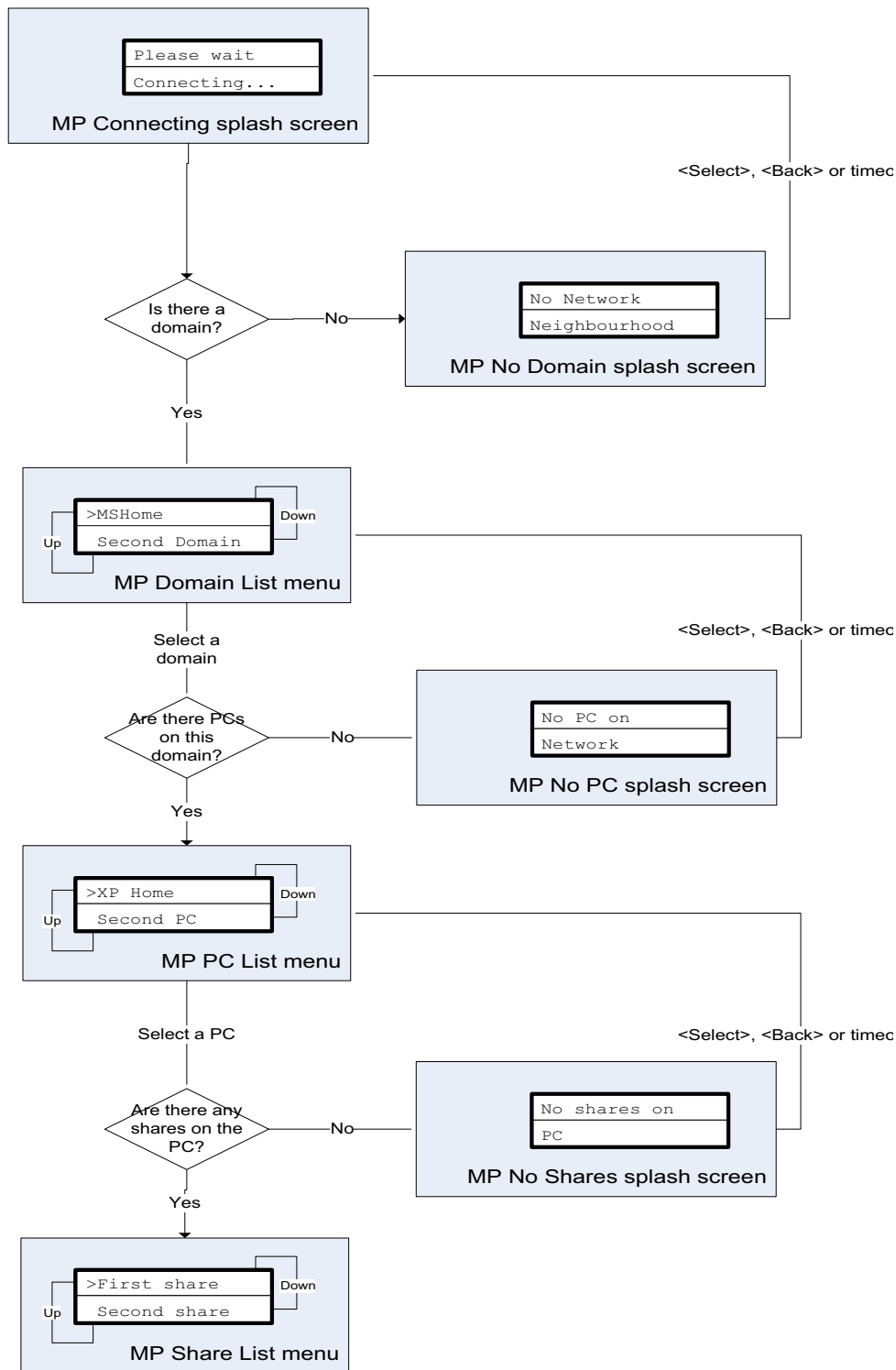
The Music Player allows accessing music files stored on a PC connected to the same network and playback through the radio. The *Music Player* can be accessed direct from the *Main menu*.



The connection process is different depending on the Music Player mode selected.

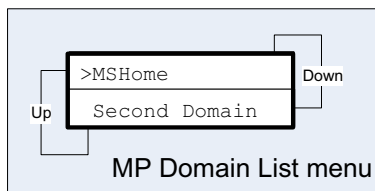
Option 1) Shared folders

The start-up flow when entering Music Player Shared folders mode is shown below:

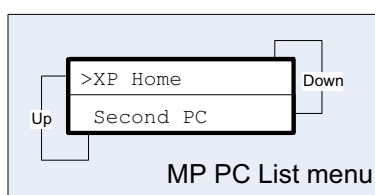


Music Player startup flow

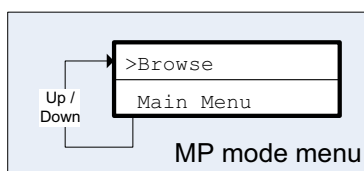
1. Ensure that the user name and password have been configured as described on page 15-16.
2. Enter the music player menu
3. Radio searches for all available domains and shows all found domains



4. Once the user selects a domain, a list of PCs on the domain is displayed:

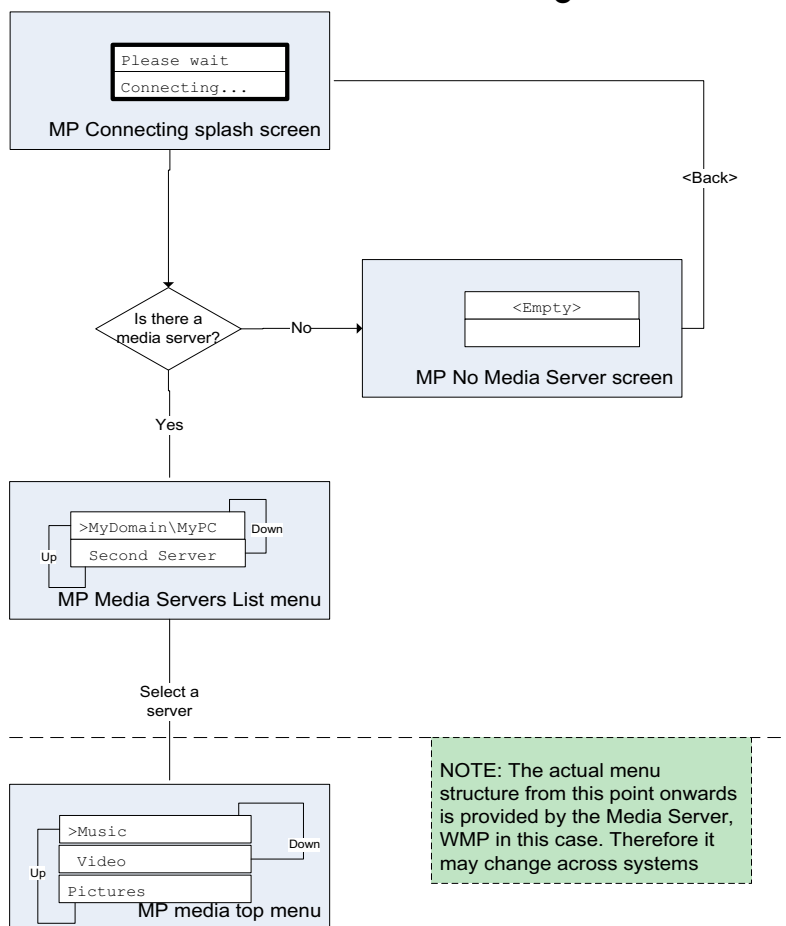


5. Once a Domain and PC have been chosen, a list of all of the shared folders in the system is displayed.
6. select a folder and a file to play within the folder.
7. Pressing *Menu* invokes the *Music player mode menu*, which allows to return to the *Main menu*; pressing *Browse* takes into the last selected shared folder.



Option 2) Shared media

The shared media mode uses UPnP technology to make easier both setting up and navigating the Music playback mode. In this mode, the connection sequence is as detailed below:



Connection flow sequence in Shared media mode

9. The MAIN menu

Use navigation key LEFT to go back in the menu. Press several times until "MAIN MENU" is an option in the menu. Choose "MAIN MENU" by pressing TUNE" knob on front panel. Display will show:

Internet radio
Music player
DAB
FM
System setup
Info

9.1 Internet radio

Please refer to page 28 for instructions on how to use Internet radio.

9.2 Music player

Please refer to page 14 for instructions on how to setup and use Music player.

9.3 DAB

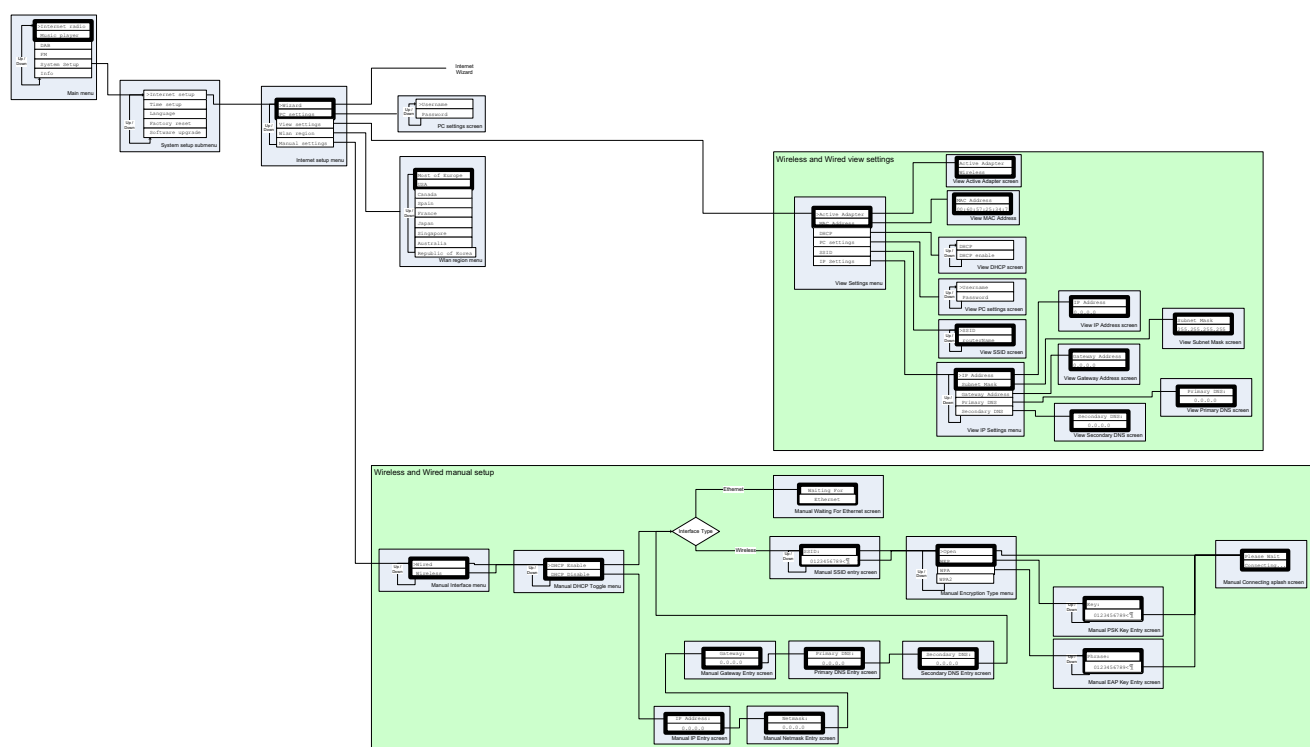
Please refer to page 31 for instructions on how to use DAB.

9.4 FM

Please refer to page 33 for instructions on how to use FM.

10. System Setup (Step by step)

System Menu Structure



Go to the "MAIN MENU" using the navigations keys and "TUNE" knob on front panel. Choose "SYSTEM SETUP" Display will show:

Internet setup
Time setup
Factory reset
Software upgrade

Choose "Internet setup". Display will show:

Wizard
PC settings
View settings
Manual settings

10.1 Wizard

Please refer to page 9 for instructions on how to use wizard.

10.2 PC settings

This setting is used to input user name and password if your PC requires this for sharing folders in "Music player"

Choose "PC setting". Display will show:

>User name
Password

Choose "User name" to input user name.

Enter "User name" by turning "TUNE" knob on front panel.

Use navigation keys "UP/DOWN" on remote or turn "TUNE" knob to choose between numbers, letters, capital letters or special characters.

Enter user name using navigation keys on remote or >>| <<| buttons on front panel to choose correct number/letter and use "TUNE" knob on front panel to confirm.

When whole user name is entered correctly choose → to proceed. Choose "<" to clear and "C" to cancel.

Choose "Password" to input password. (Leave blank if no password has been set).

Enter "Password" by turning "TUNE" knob on front panel.

Use "TUNE" knob to choose between numbers, letters, capital letters or special characters.

Enter password using >>| <<| buttons on front panel to choose correct number/letter and press "TUNE" knob on front panel to confirm.

When whole password is entered correctly choose → to proceed. Choose "<" to clear and "C" to cancel.

10.3 View settings

This setting is used to view the current settings. Choose "VIEW SETTINGS". Display will show:

>Active adapter
MAC address
DHCP
PC settings
SSID
IP settings

10.3.1 Active adapter

Choose this to view the active adapter.

10.3.2 MAC address

Choose this to view the MAC address of the F1(F2).

10.3.3 DHCP

Choose this to view the DHCP setting. (Enabled or disabled).

10.3.4 PC settings

Choose this to view User name or Password set for Music player.

10.3.5 SSID

Choose this to view SSID.

10.4 IP settings

Choose this to view PC settings. Display will show:

>IP address
Subnet mask
Gateway address
Primary DNS
Secondary DNS

10.4.1 IP address

Choose this to view the IP address.

10.4.2 Subnet mask

Choose this to view the Subnet mask.

10.4.3 Gateway address

Choose this to view the Gateway address.

10.4.4 Primary DNS

Choose this to view Primary DNS.

10.4.5 Secondary DNS

Choose this to view Secondary DNS.

10.5 Manual settings

Choose this to manually setup your network. Display will show:

>Wired
Wireless

(Note! Wired is an optional feature and may not be available for your F1(F2).)

Choose wireless. Display will show:

>DHCP enable
DHCP disable

Choose your desired setting.

10.5.1 DHCP enable

Display will show:

SSID
0123456789< → C

Enter "SSID" by using "TUNE" knob on front panel.

Use navigation keys "UP/DOWN" on remote or turn "TUNE" knob to choose between numbers, letters, capital letters or special characters.

...it's all about listening

Enter SSID using >>| <<| buttons on front panel to choose correct number/letter and press "TUNE" knob on front panel to confirm.

When whole SSID is entered correctly choose → to proceed. Choose "<" to clear and "C" to cancel.

Display will show:

>Open
WEP
WPA
WPA2

Choose your Security. If Open is chosen (No security) radio will connect. However having No security is not recommended. If any other security (WEP, WPA, WPA2) is chosen, display will show:

If WEP is chosen:

>Open
PSK

If WPA is chosen:

>TKIP
AES

If WPA2 is chosen:

>TKIP
AES

Choose your desired setting. Display will show:

Key:
0123456789< → C

Enter "Key" by turning "TUNE" knob on front panel.

Use "TUNE" knob to choose between numbers, letters, capital letters or special characters.

Enter key using >>| <<| buttons on front panel to choose correct number/letter and press "TUNE" knob on front panel to confirm.

When whole key is entered correctly choose → to proceed. Choose "<" to clear and "C" to cancel.

Radio will connect.

10.5.2 DHCP disable

Display will show:

IP address
0.0.0.0

Enter desired IP address by using "TUNE" knob on front panel. Press "TUNE" knob to go to next number. When fully entered display will show:

Subnet mask
255.255.255.0

Enter desired Subnet mask by using "TUNE" knob on front panel. Press "TUNE" knob to go to next number. When fully entered display will show:

Gateway address
0.0.0.0

Enter desired Gateway address by using "TUNE" knob on front panel. Press "TUNE" knob to go to next number. When fully entered display will show:

Primary DNS
0.0.0.0

Enter desired Primary DNS by using "TUNE" knob on front panel. Press "TUNE" knob to go to next number. When fully entered display will show:

Secondary DNS
0.0.0.0

Enter desired Secondary DNS by using "TUNE" knob on front panel. Press "TUNE" knob to go to next number. When fully entered display will show:

SSID
0123456789< → C

Enter "SSID" by using "TUNE" knob on front panel.

Turn "TUNE" knob to choose between numbers, letters, capital letters or special characters.

Enter SSID using >>| <<| buttons on front panel to choose correct number/letter and press "TUNE" knob on front panel to confirm.

When whole SSID is entered correctly choose → to proceed. Choose "<" to clear and "C" to cancel.

Display will show:

>Open
WEP
WPA
WPA2

Choose your Security. If Open is chosen (No security) radio will connect. However having No security is not recommended. If any other security (WEP, WPA, WPA2) is chosen, display will show:

If WEP is chosen:

>Open
PSK

If WPA is chosen:

>TKIP
AES

If WPA2 is chosen:

>TKIP
AES

Choose your desired setting. Display will show:

Key:
0123456789< → C

Enter "Key" by using "TUNE" knob on front panel.

Turn "TUNE" knob to choose between numbers, letters, capital letters or special characters.

Enter key using >>| <<| buttons on front panel to choose correct number/letter and press "TUNE" knob on front panel to confirm.

When whole key is entered correctly choose → to proceed. Choose "<" to clear and "C" to cancel.

Radio will connect.

10.6 Time Setup

Please go to page 11 **7. Setting the time and date**

10.7 Factory Reset

Go to "MAIN MENU"

Use navigation key LEFT to go back in the menu. Press several times until "MAIN MENU" is an option in the menu. Choose "MAIN MENU" by pressing "TUNE" knob on front panel. From the main menu choose "System setup" From system setup choose "Factory reset" Display will show:

Press 'INFO' to
confirm reset

Press "INFO" on front panel to confirm reset. By doing this the radio will restart with the factory settings. This also means that all connections has to be configured again. A factory reset may be necessary if the radio is not functioning correctly or menu/display is acting up.

10.8 Software upgrade

This feature is NOT to be used. This can seriously damage the radio and should only be used by qualified service personal

Please contact your service center before software upgrade

10.9 Info

Choose "Info". Display will show:

>SW version
Radio ID

Choose "SW version" to see the software version.

Choose "Radio ID" to see the unique ID of your radio. This can be used to create an account on <http://www.wifiradio-frontier.com>

10.9.1 Adding favourites and stations

To get this you need to use the Access Code (Radio ID). You will find this in Internet radio mode by playing a radio station. Then press MENU – STATION LIST – SELECT – HELP – GET ACCESS CODE. The WiFi radio will display the access code to use on <http://www.wifiradio-frontier.com>

Log onto the Frontier Silicon internet radio portal to configure your radio (for example to add favourites or add stations).

Station name	Location	Genre	Stream
Radio Italia	Italy	Rock	MP3
FSL-Shout1	United Kingdom	Shoutcast-Test	MP3
FSL-Shout2	United Kingdom	Shoutcast-Test	MP3
FSL-Shout3	United Kingdom	Shoutcast-Test	MP3
FSL-Shout4	United Kingdom	Shoutcast-Test	MP3
FSL-Shout3-DNS	United Kingdom	checking DNS lookup	MP3
WIZB	US Alabama	Christian	WMA
WTVY	US Alabama	Country	WMA
WRTT Rocket	US Alabama	Rock	WMA
WQEN-HD2	US Alabama	Adult Contemporary	WMA
WKMX	US Alabama	Adult Contemporary	WMA
W1QR 1410 AM	US Alabama	Sports	WMA

Frontier Silicon Internet Portal

To access the Frontier Silicon internet radio portal:

1. Open a web browser and go to: <http://www.wifiradio-frontier.com>
2. If not yet a member, click on *Register here* link. It will ask for the Access Code from the Wi-Fi radio.
3. To get the Access Code, go to Internet Radio mode, then press <back> > *Help* > *Get access code*. The radio displays an entry that states the access code of the unit in the form: "Access code ABCD123". Enter the code into the entry field on the website.
4. Fill in the rest of fields, including username, password and radio model
5. Click *Register*, after which you should now be taken back to the configuration page.
6. You should now be on a page used for configuring the favourites and added stations for your specific F1(F2).

To add stations to the "Favourites" group for your specific Wi-Fi radio, simply browser through the list of stations genres until you find something you want to add, then click on the heart symbol to the left of the station name. The first time you add a station, you'll be asked to create a new group for that station. This group will appear as a sub-menu item under the "Favourites" entry in the root vTuner menu. You can add as many stations to favourites groups as you like.

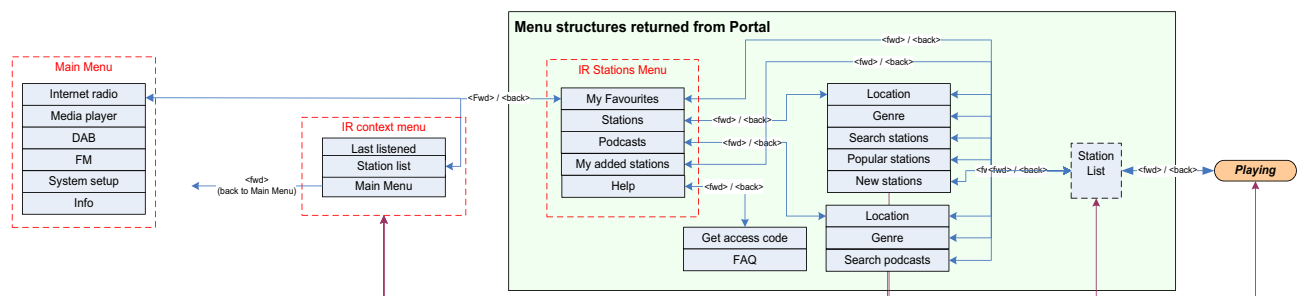
When you have added what you want, simply restart your Wi-Fi radio. You should now find that the groups and added stations appear under the "Favourites" list.

To reset the favourites and added stations, register the radio in the website under a new user account and request a new access code for the radio. (Same process as above).

11. Using Internet Radio

The Internet Radio mode allows the user to select services (Live radio stations or Podcasts) to listen to from the portal.

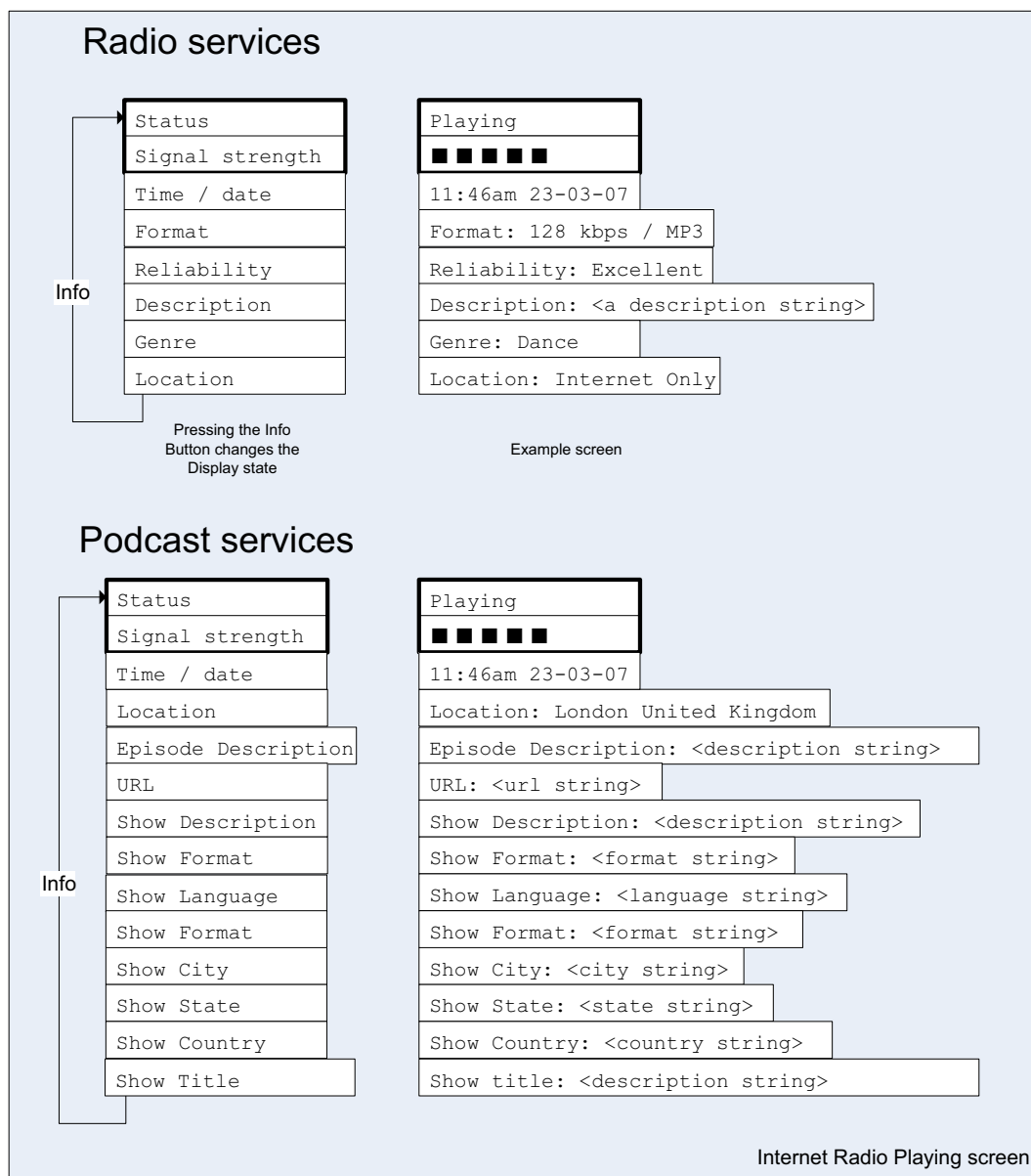
When the user connects to Internet Radio , a station list is provided. This is built up after the initial logon from the server. The actual menu items within the Station list menu will not change and it is sent back directly from the portal; We do not alter the data. The Station list menu and the two submenus that lead off (for items relating to Internet Radio and Podcasts, respectively) are shown below.



The Internet Radio Stations list menu provides the following functions:

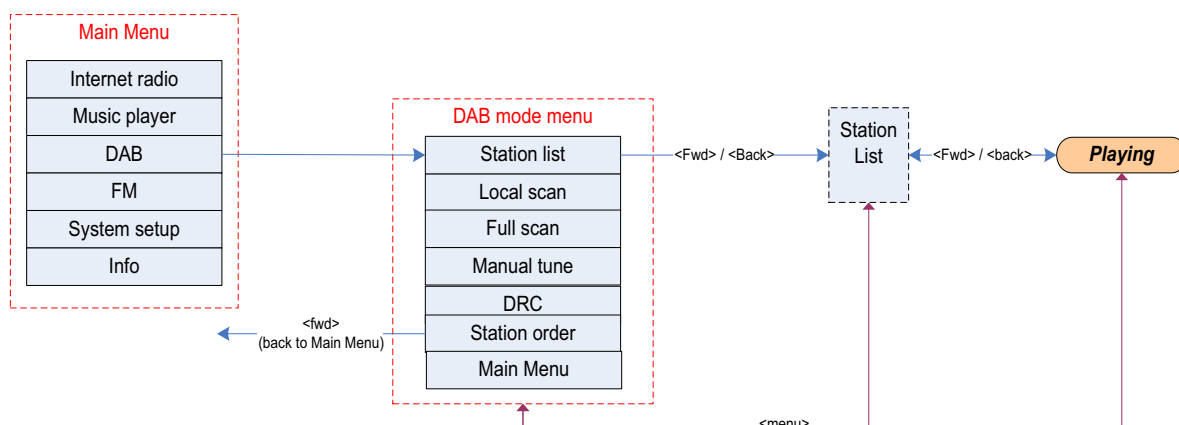
Name	Description
My favourites	Create an account on http://www.wifiradio-frontier.com/ When you have created an account you can now add favourites directly to your radio. You can also add your own stations if needed. You can also listen to all the radio stations from here on your PC.
Stations	Navigates to sub-menu which allows user to navigate to stations by location, genre, most popular, new stations, or by doing a search by alphabets.
Podcast	Navigate to sub-menu which allows users to navigate to podcast and listen-again services by location, genre, or by doing a search by alphabets.
My Added stations	Create an account on http://www.wifiradio-frontier.com/ When you have created an account you can now add favourites directly to your radio. You can also add your own stations if needed. You can also listen to all the radio stations from here on your PC.
Help	Use Get Access code during the radio registration on the internet portal, see 10.9.1 Adding favourites and stations on page 26 for details. The FAQ offers help for common problems with Internet Radio.

The Internet Radio playing screen displays information on the currently selected service, and is the default behaviour when a service is selected and playing. The top line always displays a Station name, whilst the information displayed in the bottom line can be scrolled through by pressing the INFO button on the front panel. The different info displayed are shown below.



12. Using DAB Radio

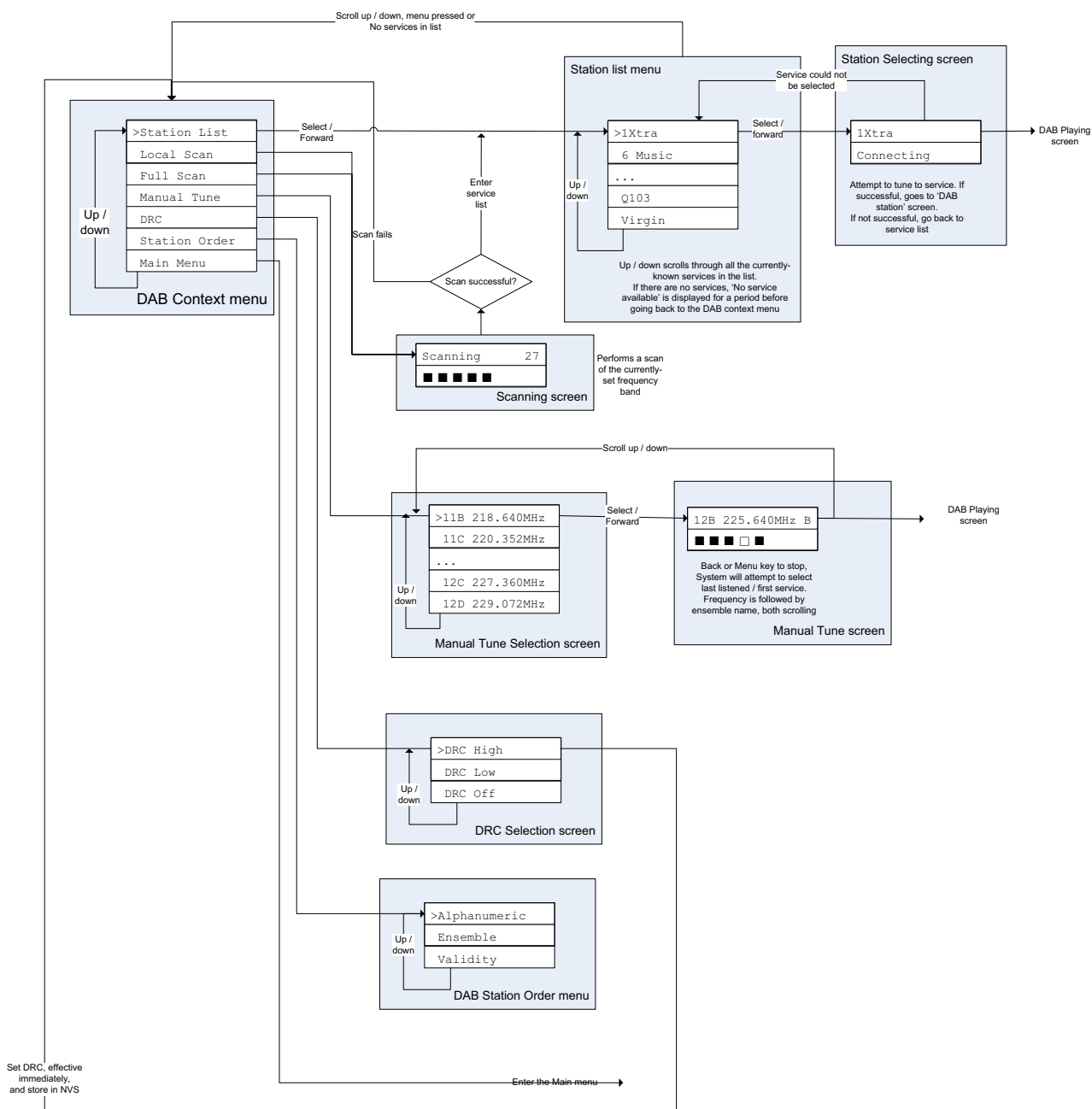
The first time DAB mode is selected a Scanning of available stations is performed. Turn TUNE knob to choose a DAB station. Press TUNE knob to confirm.



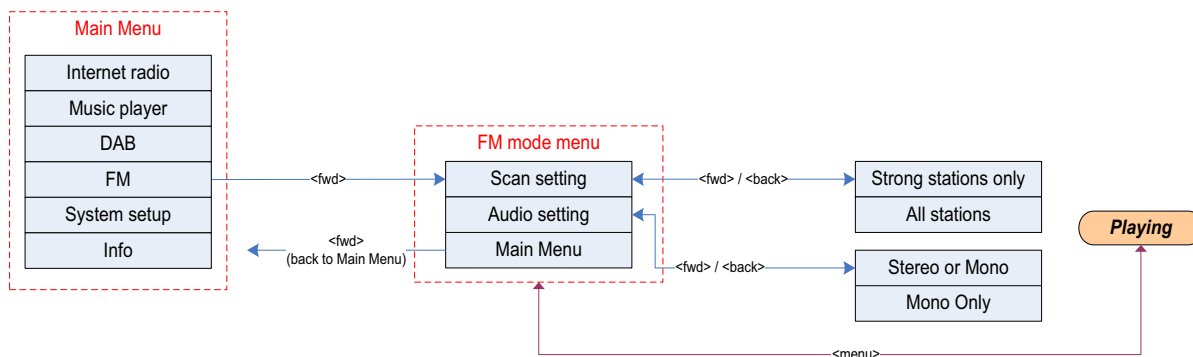
The DAB context menu provides the following functionalities:

Name	Description
Station list	Shows a list of all available DAB stations.
Local scan	Performs a scan of the local DAB ensemble range(for example, a product designed for the UK will scan ensemble 11B to 12D).
Full scan	Performs a scan of the whole DAB ensemble range
Manual tune	list of frequencies displayed is dependant on the currently-set frequency band and contains all of the frequencies within that band. It starts with the short name of the frequency. for example 12B, and is followed by the actual frequency in MHZ
DRC	Allows users to set the Dynamic Range Control for the DAB audio decoder.
Station order	Allows the station list to be sorted in alphanumeric order, by ensemble, or by validity (station which are off-air will be moved to the end of the list).

DAB Mode menu structure



13. Using FM Radio



The FM context menu allows you to set up the following:

Name	Description
Scan setting	<p>The Scan settings menu allows the user to set how an FM search (started by a long-hold press of the Up/Down keys in the FM Playing screen) behaves.</p> <p>Stop on strong signals only' will only stop under strong signal strengths if other objectives are also meant. This means that the audio quality of services that it stops on should be good, there is also the chance that desired services may be missed.</p> <p>Stop on all signals' will stop under many more circumstances, including Carrier Wave and other non-broadcast interference. Whilst this means that there will be more stops, it reduces the chances of missing a desired service.</p>
Audio setting	<p>The Audio setting menu allows the user to set whether to always play stereo stations in mono mode, or whether to switch stereo stations to mono when the signal quality gets below a certain threshold</p>

To search for a stations press TUNE knob to automatically search for a station. Turn TUNE knob to manually set frequency.

14. Presets:

Presets are a system that allows the user to store a number of preset stations in each mode. The behaviour of presets is different in each mode because of the way that the preset is stored within the system.

Presets are available in the following modes:

- Internet Radio
- DAB
- FM

A short press of a preset button is used to recall a preset. A long press of a preset button is used to store a preset.

When listening to a radio station (Internet/DAB/FM) Press and hold numeric key 1-4 to store a station to preset. When station is playing press and hold will show PRESET STORED and the current station will be stored (stored 1-4)

Playing a preset station (1-4)

Press the numeric key with a station already preset. The preset station will play.

Pressing SHIFT and numeric key 1-4 to store a station to preset (5-8), when station is playing press and hold will show PRESET STORED and the current station will be stored (stored 5-8)

Playing a preset station (5-8)

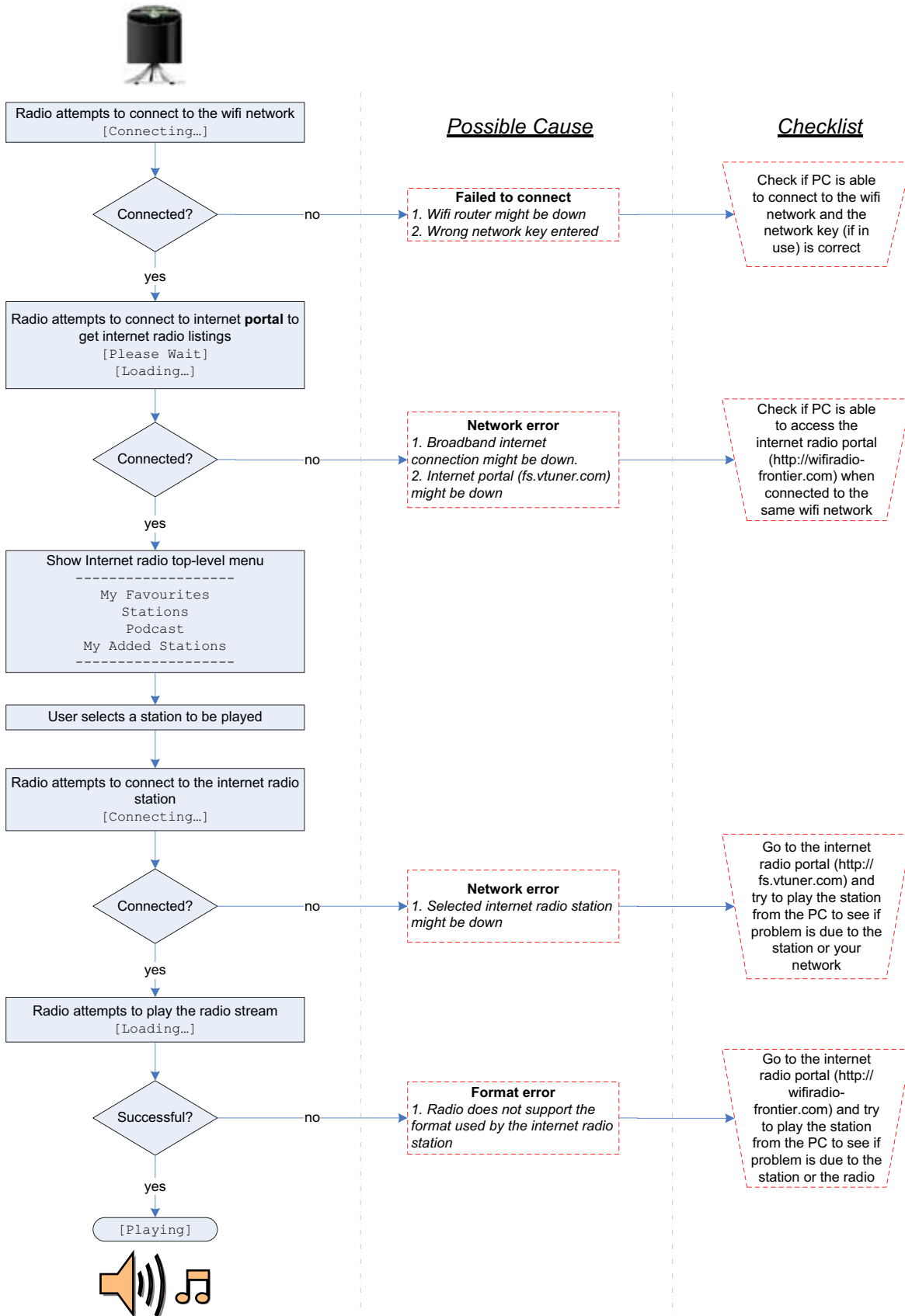
Press SHIFT and numeric key 1-4 with a station already preset. The preset station will play.

15. Info and Error Messages

The following is a description of the info and error messages that the Wi-Fi radio could possibly display.

Message	Type	Description
Failed to connect	Error	Seen when a Wi-Fi network related error occurs. Some examples of circumstances which will trigger a 'failed to connect' are : <ul style="list-style-type: none"> - radio fails to connect to Wi-Fi network - wrong network security key entered
Network error	Error	Seen when a server/connection related error occurs. Some examples of circumstances which will trigger a 'network error' are : <ul style="list-style-type: none"> - radio fails to connect to Wi-Fi network - radio fails to connect to internet radio portal - radio fails to connect to a radio station - radio's was streaming a station and connection fails midway through the streaming - radio fails to connect to a PC for streaming music
Format error	Error	Seen when the radio has problem playing the media due to unsupported format type. Some examples of circumstances which will trigger a 'format error' are : <ul style="list-style-type: none"> - Radio tunes to a internet radio station which is being transmitted using an audio codec not supported by the radio (i.e. AAC+). - Radio tries to play a music file from a PC which is in a format not supported
Not available	Info	Seen when the radio tries to tune to a DAB station without sufficient signal reception.
Connecting...	Info	Seen when the radio tries to establish connection with a network, server, portal, station.
Loading...	Info	Seen once the radio has established connection, and starts buffering the station/stream.
Playing	Info	Seen once the radio has completed connecting, and loading, and starts playing the stream. This is the point when the station becomes audible.

16. Troubleshooting – connecting to an internet station



17. FAQ

Question:	Answer:
What do I need to start using the Radio?	<ol style="list-style-type: none"> 1. To access to FM radio function, use the "source" key to set it to FM. Then scan for channels. 2. To access the DAB mode, use the "source" key to set it to DAB. Then scan for channels. <p>To access Internet radio mode, use the "source" key to set it to Internet radio mode. Then follow the on-screen instruction to choose either GENRE or LOCATION to select.</p> <p>Important: You would need a ADSL broadband connection to use the Internet Radio mode. And you would need to have a Wireless router/Acess Point to connect wirelessly.</p>
How do I connect the radio to my wireless network?	<p>On initial power up the radio will prompt you to "Scan for network". After a brief scan a list of all available networks will occur and allow you to select which one you wish to use.</p> <p>If the selected network is not configured to request a password, you can immediately access your wireless network.</p> <p>If the selected network is configured to request a WEP key, you will be asked to enter the key at this point.</p>
It will not acknowledge my encryption key?	Remember to write it with capital letters if needed.
It will not connect to my wireless network?	<p>It is worth checking the following if you are experiencing problems connecting to your wireless network:</p> <p>Check that you are using the correct WEP Key / passphrase, remember this will be case sensitive.</p> <p>Check if your router connected to the internet. The easiest way to check this is if you have a computer on the same network, if it can access the internet we know the router is connected to the internet.</p> <p>Check that your WIFI network allows other</p>

	devices to get access. Then reboot radio and try again.
Can I receive Radio on my Radio if no Internet connection is available?	Yes, if you don't have access to a wireless network, you can still use your Radio to listen to FM and DAB broadcasts.
Why won't my Radio playback my media files?	<p>If you are experiencing difficulties in playing media files, it is worth checking the following:</p> <ul style="list-style-type: none"> • If you are logged in as a guest, you may not have access privileges to all shared files which may include media files. • If the files you are trying to access are the correct file type, remember that this radio will only playback MP3, WMA & AAC files. • If you are using Mac OS X, please ensure you have Windows files sharing activated.
I can see my music listed on the Radio's album list but cannot play it back?	Please check that the media you are trying to access is not copy protected. Our Radio will not play DRM or copy protected media files.
Does the Radio have memory presets to hold my favourite stations?	Yes, It allows you to store 8 internet radio stations, 8 DAB radio stations and 8 FM stations.
I am getting an error when entering Radio ID on http://www.wifiradio-frontier.com ?	This is because it is not the Radio ID that needs to be entered but the Access Code instead. To get the Access Code please start playback of an internet radio station and press MENU. Turn SELECT knob and choose Station List. Turn SELECT knob and choose Help. Choose Get Access code. This is the code to enter on http://www.wifiradio-frontier.com
I have manually entered IP etc. but I get no connection?	It is sometimes necessary to unplug the power of the radio after manually settings. Please re-start radio.

<p>I am using a MAC. How can I stream music from MAC to the radio?</p>	<p>You are able to stream music from your MAC/iTunes to your radio through the "shared folders" library. Please also check that your music folder on your MAC is "shared". For guideline how to share your folders please check your MAC instruction booklet. NOTE: If you are still having problems you can also install the third-party software like Twonky Media.</p>
<p>Is this Radio compatible with Windows PCs and Apple Macs?</p>	<p>Yes it can access PCs or Macs that are connected to your wireless network. Meaning that MP3, WMA and AAC media files can be played back.</p> <p>Additionally, if you are running a PC with Windows XP or Vista, you can use Windows Media Player 11 (WMP11) as a UPnP server. This allows Pico Wi-Fi to access albums, genres, tracks and playlists as listed on WMP11.</p>
<p>Can I Use a MAC Airport router?</p>	<p>If you are connecting to a Mac Airport wireless network, make sure the password you are using is for non Mac devices. This password is likely to differ from the password used for other devices on your Airport network. Your non Mac devices password can be checked in the Applications folder. Under Utilities, select Airport Admin where you can then click on the Password icon to view the password.</p>