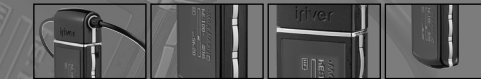


iriver
<http://www.iriver.com>

iriver



User's Manual
iriver N10



MP3
DIGITAL AUDIO

Plays
Windows Media™

Mac OS

REC
VOICE
recorder

CE

Firmware Upgradable™

Thank you for purchasing the product.

Please read the manual carefully before use.

Chapter

1



I Quick Start I

Turning on/off the Player 2

Listening to music 2

Recording 3

Charging the Player 4



Turning on/off the Player

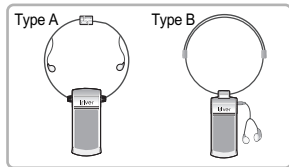
- 1 | Turning on the player**
Press the PLAY/STOP button to turn the player on.



- Press the PLAY/STOP button again to play music.



- 2 | Turning off the player**
Press and hold the PLAY/STOP button to turn the player off.

**Playing Music**

- 1 | Connecting earphones**
Connect the earphones as shown above.



- 2 | Playing music**
Press the PLAY/STOP button to play music.



- 3 | Selecting track**
 ◀◀ : Selects the previous track.
 ▶▶ : Selects the next track.



- 4 | Controlling volume**
 + : Increases volume
 - : Decreases volume



The player will power off after a period of time with no-activity (not playing music, etc.). Please see Page 46 to adjust this setting.

Recording Voice



- 1 | Navigating menu**
Press and hold the MENU button.



- 2 | Selecting Voice Recording**
Press the ◀◀ / ▶▶ button to select [Voice].



- 3 | Recording Stand By**
Press the PLAY/STOP button.
- The player will be in standby mode with displaying RECORD READY on LCD.



Recording Voice



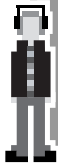
- 4 | Starting recording**
Press the MENU button.
- Recording will be started.



- 5 | Finishing recording**
Press the MENU button again.
- Recording will be finished.



- 6 | Listening to recording file**
Press the PLAY/STOP button after stopping recording to play the recorded file.

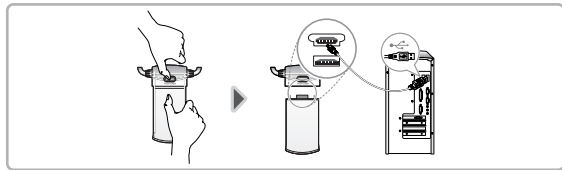


Charging the Player

1 | Charging with USB cable.

Push the "PUSH OPEN" on the back of your player to disconnect its cap as shown below. Connect the USB port and PC with USB cable to charge battery.

The player will charge automatically when the player is connected to the PC.



| Player will charge even when powered off.

| Charging time: Approx. 1.5 hours (At full discharge, Stop mode)

Note ...



iriver

Chapter

2



I Getting started I

Greetings	6
Copyright and Certifications	6
Trademarks and Disclaims	7
Features	9

Accessories	9
Locating the Controls	10
LCD Display	11



Getting started

Greetings

Thank your for your iriver purchase.

Also, welcome to the world of N10, the market-leading MP3 player. We are sure that the iriver's N10 player may sufficiently satisfy you and make your life more enjoyable. This user's manual is provided to help you safely use the product. Please read this manual carefully before using it. Thank you.

<http://www.iriver.co.kr>

The iriver's home page provides the overview of company and products, other related information, and answers to common questions. Firmware and software updates are also available as well as the most recent information about your iriver product.

You may get useful information from "User's Forum" and FAQ. Register your ID and get any appropriate online customer support. Also, you can get newsletter such as newly announced product, firmware upgrade, various promotion events via email.

Getting started

Copyright and Certifications

Copyright

iriver Limited has all the rights of the patent, trademark, literary property and intellectual property related to this manual. You may not copy or reproduce any part of this manual unless authorized by iriver Limited. You can be punished by using any part of this manual illegally.

The software, audio and video which have an intellectual property are protected by copyright and international laws. It is user s responsibilities when he/she reproduce or distribute the contents created by this product.

The companies, institutions, products, people and events used in examples are not real data. We don't have any intension to be related with any companies, institutions, products, people and events through this manual and should not draw inferences. Users are responsible for observing the copyrights and intellectual properties.

© 1999~2004 iriver Limited, All rights reserved.

Certifications

CE, FCC, MIC

Trademarks and Limited Liability

Trademarks

Windows, Windows 98 SE, Windows ME, Windows 2000, Windows XP and Windows Media Player are registered trademarks of Microsoft Corp.

Limited Liability

Neither the Manufacturer, importers nor dealers is responsible for any accidental damage including bodily injury or any damage resulting from misuse or unsuitable operation by you.

The information on this manual is prepared with the current product specifications.

The manufacturer, iriver Limited, is adding new features to the product and may persistently apply new technologies hereafter.

All standards may be changed at any time without notice.

Note ...



iriver





Getting started

Features

| 16 Gray Organic EL Display Supporting Multiple Languages

N10 series comes with 16 gray OLED which can support multiple languages (40 languages).

| Necklace with Integrated Earphones

| Direct Charging via USB

| 6 Preset EQ : Normal, Rock, Jazz, Classic, U Bass, Metal

| Voice Recording

Voice record level is automatically controlled by AGC function.

| Xtreme EQ and Xtreme 3D

Customize your own EQ with Xtreme EQ and enhance bass and surround sound with Xtreme 3D.

| Firmware Upgrade

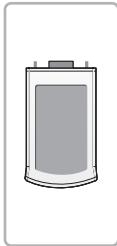
Provides the latest updated features via firmware upgrade.

| Supports 100 folders total and up to 260 files at one time

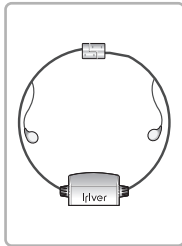
| Simple navigation makes it easy to find any song

Accessories Accessories subject to change without notice and may vary from image shown.

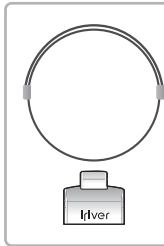
| Main unit



| Type A
Necklace style earphone



| Type B
Necklace, cap



Hold connection part of necklace and push it into the direction of arrow.

Hold the end of strap and pull it out to the direction of arrow to separate the connection part.

Put the separated end into the neck strap hole on the player. The connected part will be released.

Assemble the earphone in the opposite order after putting the strap in the connection hole of the player.



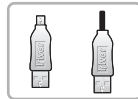
| Earphone Covers



| Installation CD



| Mini USB Adapter /
USB Cable



| User Manual/Warranty Card/
Quick Start Guide



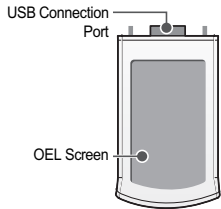
Getting started

Locating the Controls

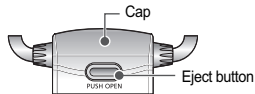
Actual player may differ slightly from images below.

Type A

1 | Front View



2 | Rear View



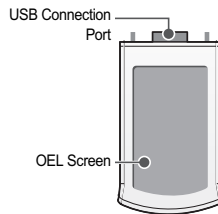
Getting started

Locating the Controls

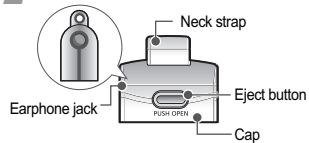
Actual player may differ slightly from images below.

Type B

1 | Front View



2 | Rear View

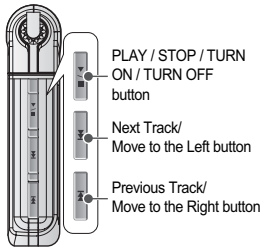


Getting started

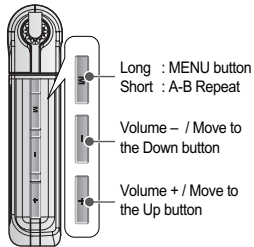
Locating the Controls

The images below can be different from the product.

1 Left side



2 Right side



Getting started

LCD Display

1 MUSIC mode



- 1 Clock
- 2 Progress Bar
- 3 Playback Mode / Status
- 4 Folder Name
- 5 Music Title
- 6 Battery Indicator
- 7 Play Time
- 8 Volume Level
- 9 EQ / File Format / Bit Rate / Sample Rate



Getting started

LCD Display

File format



ASF



WMA



MP3



IRM

NOTE



IRM (iriver Rights Management)
iriver Rights Management is a digital music format.
Please visit our web site for details about this music format.

Getting started

LCD Display

2 RECORD mode



[Before Recording]

- 1 Recording Status
- 2 Recording Icon
- 3 Status Bar
- 4 Number of Files
- 5 Recording Time
- 6 Remaining Time



[After Recording]

- 7 Recording Status Bar
- 8 Recording Folder Name
- 9 Recording File Name

Chapter

3



I Basic Operation I

PC Software Installation	14	Windows	25
Connecting to the PC	17	Help	25
Installation of "New Hardware"	18	Downloading from the PC	26
Safely Removing the Player from the PC	19	Basic Operation	27
Operate the Software	20	Navigation	27
Learning the Basic Function	22	MP3	28
Toolbar Menu	22	Voice Recording	29
File Managing Tools	23	Menu Setting	31
File Menu	23	Deleting File or Folder	32
View Menu	24		
Tools	24		



Basic Functions

PC Software Installation

Install the software before connecting the player to PC.

NOTE



System Requirements (Windows)

- Pentium 133Mhz or higher
- USB port
- Windows 98 SE/ME/2000/XP
- CD-ROM drive
- 10MB of free hard disk space or higher

- 1 On inserting software installation CD into CD-ROM drive located in PC, the following screen will appear.



- If the installation program does not automatically run in a few seconds, click My Computer icon to browse the CD-ROM drive and run SETUP.EXE manually.
- The software installation CD contains :
 - Device Driver
 - Manager Program for PC
 - Manager Program for Mac

Basic Operation

PC Software Installation

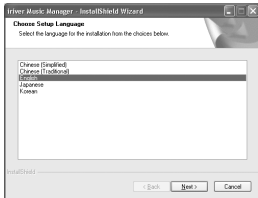
Install the software before connecting the player to PC.

- The software enables you to save MP3 and other format files into your player.
- For Microsoft Windows 2000, login as Administrator to install the software.
- For Microsoft Windows 2000 user, login as Administrator to install the software.

PC Software Installation

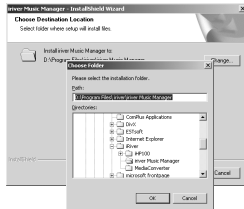
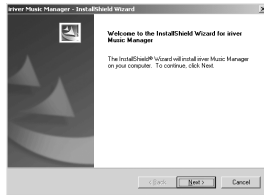
Install software before connecting the player to PC.

- 1 Insert the installation CD into the CD-ROM drive. Installation starts automatically.
- 2 Select a language for iriver Music Manager and Click "Next" after selecting the language to install.



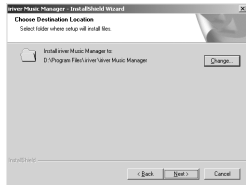
PC Software Installation

- 3 Click "Next" to install iriver Music Manager.
- 4 Select a folder to install iriver Music Manager and click [OK]. Select the folder to install. Click "Next"

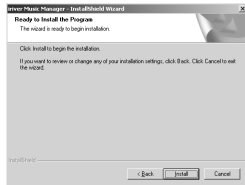


PC Software Installation

5 Click "Next" to continue the installation.

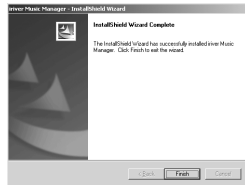
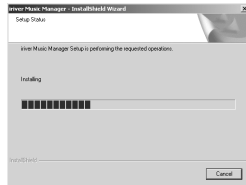


6 Click "Install" to proceed.



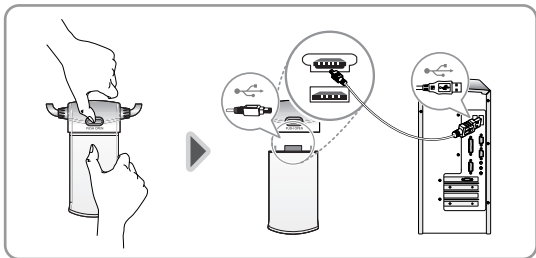
PC Software Installation

7 Click "Finish" when installation is complete.



Connecting to the PC

- 1 Push the "PUSH OPEN" on the back of your player to disconnect its cap as shown below. Connect the USB port and PC with USB cable.



Connecting to the PC

- 2 "USB CONNECTED" will appear on the LCD screen of the player.



Connect the USB cable to the PC after playback stops to avoid errors.

Installation of "New Hardware"

- 1 After connecting the player to your PC, "Found New Hardware" screen is displayed.



Installation of "New Hardware"

- 2 Information screen is displayed on the PC.
New hardware is installed successfully and ready to use.



NOTE



! New hardware installation process starts after installing iriver Music Manager program.

Safely Removing the Player from the PC

If abnormally removed from PC, the player may be damaged or cause serious malfunction.

- 1 Right-click the "Safely Remove Hardware" icon in the taskbar.



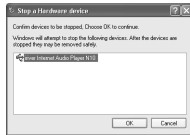
Safely Removing the Player from the PC

- 2 Select the device to remove and click "Stop".



Safely Removing the Player from the PC

- 3 Click the "OK" after confirming the hardware to remove.

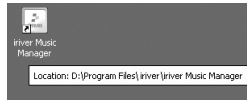


- 4 Click the "Close" after confirming the Safely Remove Hardware message. (Windows XP)



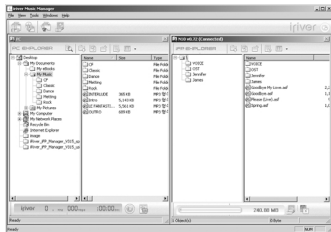
Operate the Software

- 1 Double click the iriver Music Manager icon. 2 iriver Music Manager version installed is displayed.



Operate the Software

3 Initial iriver Music Manager window.



The right side of iriver Music Manager will display the contents of your player. If nothing is displayed in the right screen, please be sure that the player is properly connected to the USB cable and to the PC. It may be necessary to disconnect the player from the cable and reconnect it to activate the right side of iriver Music Manager.

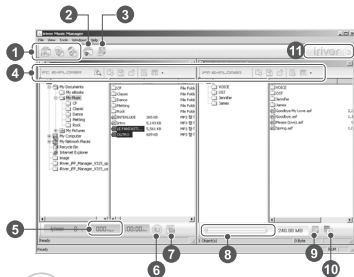
Note ...



iriver



Learning the Basic Function



NOTE

N10 does not support Audio CD Extracting Wizard, Image Viewer, and Tuner Setting functions.

- 1 Wizard
- 2 Image Viewer
- 3 Firmware Upgrade
- 4 File Managing Tools
- 5 Detail information on selected music
- 6 Play the selected music with Windows OS preferred player
- 7 Play selected music file. (Uses system default player).
- 8 Remaining capacity of the player
- 9 Tuner Setting
- 10 Format Player
- 11 iriver Home Page Link

Toolbar Menu



File Transfer Wizard

To transfer files from PC to the player.



Audio CD Extracting Wizard

To extract the file with OGG format from Audio CD.



File Conversion Wizard

To convert recorded REC files to a format your PC can use.



Firmware Upgrade

To upgrade Firmware.

NOTE

N10 does not support Audio CD Extracting Wizard, Image Viewer, and Tuner Setting functions.

File Managing Tools



Search

Searches for file(s) or folder(s) within current window.



Move to Parent Folder

Moves currently selected folder to parent folder.



Refresh

Refreshes information on file(s) or folder(s) within current window.



New Folder

Makes a new folder.



Properties

Displays detail information on currently selected file or folder.



View

To change how to display the selected folder.

File Menu



New Folder

To make a new folder on the PC or the player.

Delete

To delete the selected folder or files on the PC or the player.

Rename

To rename the selected file or folder on the PC.

Properties

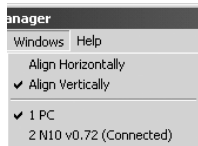
To display detailed information about the folder or file selected.

Exit

To exit the iriver Music Manager.



Windows



Align Horizontally

To display the PC and player's windows horizontally.

Align Vertically

To display the PC and player's windows vertically.

Help



About iriver Music Manager

To confirm the version of Manager.

iriver Music Manager Help

Opens iriver Manager Help.

Firmware Information

To see the information about your player.

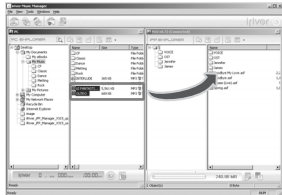
iriver Homepage

To connect the iriver homepage.



Downloading from the PC

- 1 Select the folders or files on the PC to transfer to the player.
Drag and drop to move folders or files to the desired location on the player.

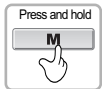


Downloading from the PC

- 2 Once the music files appear on the right side of iriver Music Manager, they are on your MP3 player.



- ! Files with over 127 characters in the file name will not be transferred.
- ! Files with total path and filename over 512 characters will not be transferred.
- ! The ROOT folder is limited to 1024 files and folders total. Subfolders do not have a limit to the number of files.

Basic Operation

- 1 | Menu**
Press and hold the MENU button.



- 2** Press the **◀▶** switch to select a mode.
- Navi - **MP3** - Voice - Setup



- 3** Press the MENU button to confirm.
- MP3 function is selected.

**Navigation** Navigation function allows you to search music.

- 1 | Navigation**
Press and hold the MENU button.



- 2** Push the **◀▶** switch to select [Navi] and press the MENU button.



- 3 | Select folder and file.**
Press the **<+ / - , ◀▶** button to move to the folder and file.
+ : To move up. - : To move down.
◀▶ : To move to the upper folder. ▶▶ : To move to the lower folder.



Basic Operation Navigation



4 | Playing selected file(s)

To select the track, press the PLAY/STOP or ►► button.



Basic Operation MP3



1

Press and hold the MENU button.



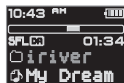
2

Push the ◀◀ / ▶▶ switch to select [MP3].



3

Press the MENU or PLAY/STOP button to play music.



MP3

**4 | Selecting previous/next song**

Press the **⏮** / **⏭** button while playing song.

⏮ : To select the previous song.

⏭ : To select the next song.

**5 | Rewind/Fast-Forward**

Press and hold the **⏮** / **⏭** button while playing song.

⏮ : Rewinds the playing song.

⏭ : Fast-forwards the playing song.

**6 | Adjusting the volume.**

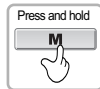
Press the **+** / **-** button to control volume.

+ : Increases volume

- : Decreases volume



Voice Recording

**1**

Press and hold the MENU button.

**2**

Push the **⏮** / **⏭** switch to select [Voice].

**3**

Pres the MENU or PLAY/STOP button to enter the RECORD mode.
(The recorder will be in standby mode.)



Basic Operation

Voice Recording

**4 | Recording voice**

Press the MENU button again to begin recording.

**5 | To pause voice recording**

Press the PLAY/STOP button to pause recording.

- Time indicator will blink to show that recording is paused.



Press the PLAY/STOP button again to resume recording.

- Pausing the recording will not create a new file, recording will be added to the current recording.



Basic Operation

Voice Recording

**6 | To stop recording**

Press the MENU button.

- After stopping a recording, starting again will create a new voice file.

**7 | Listening to recorded file**

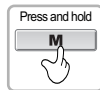
Press the <PLAY/STOP> button after stopping recording to play the recorded file.





- | The recorded file is saved as VOICE000.REC in the VOICE folder.
- | If "00:00:00" is displayed, the player's memory is full.
To record, delete files and/or folders on the player to make some space available.
(To delete: Refer to page 32, Deleting File or Folder)
- | The player cannot record when the memory is full or the battery is low.
- | Keep the player far away enough from the source to avoid distortion in the recording.
- | Recorded REC files can be converted to MP3 files using iriver Music Manager.
(Refer to page 70)

Basic Operation Menu Setting



- 1** Press and hold the MENU button.



- 2** Push the I<< / >>I switch to select [Setup].



- 3** Press the MENU or PLAY/STOP button to enter the SETUP.



For more information on Menu Setting, refer to page 40 ~ 42.





Basic Operation

Deleting File or Folder



1 Press the PLAY/STOP button to stop music playback.

- You cannot delete the file or folder which is currently playing.



2 Press and hold the MENU button to display function control. Then, highlight [Navi] and press the MENU button again to display the NAVIGATION SCREEN.



3 Select the folder and file to delete using the +/- or <<</>>> button.



Basic Operation

Deleting File or Folder



4 Press the MENU button.

- "FILE DELETE ARE YOU SURE ?" or "FOLDER DELETE ARE YOU SURE ?" is displayed.



5 Select [YES] using the <<< / >>> button and press the PLAY/STOP button to finish Delete process.



- ! You cannot delete a file which is currently playing.
- ! Only empty folders can be deleted, delete all files in a folder before deleting that folder.

Chapter

4



I Convenient Function I

Play Mode	34
A-B Repeat	36
EQ	36



Convenient Function

Play Mode



Play Mode is set under [Setup] - [Mode].



- 1** | **Changing Play mode**
Press and hold the MENU button to display function control.



- 2** | Press **Left** / **Right** to select [Setup] then press the MENU button.



Convenient Function

Play Mode



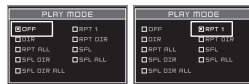
- 3** | Press the **Left** / **Right** button to select [Mode] and press the MENU button.



- 4** | Press the **+** / **-** button to select the desired play mode.



- 5** | Once the play mode has been highlighted press the MENU button to finish setting this mode.



Play Mode

REPEAT



OFF : Plays the tracks saved in memory in order and stop after playing the last track.

RPT 1 : Play a single track repeatedly.

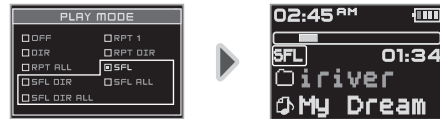
D : Play all tracks in the folder and stop.

RPT D : Play all tracks in the folder repeatedly.

RPT A : Play all tracks in the player repeatedly.

Play Mode

SHUFFLE



SFL : Randomly play all tracks in the folder.

SFL D : Randomly play all tracks in the folder and stop.

SFL A : Randomly play all tracks in the player and stop.

SFL RA : Randomly play all tracks in the player repeatedly.



Convenient Function

A-B Repeat Repeat a selected interval.**1 | Selecting point A**

Press the MENU button once to select the beginning <A> point.

**2 | Selecting point B**

Press the MENU button again to select the ending point.



Convenient Function

EQ

The EQ is set in the [Setup] - [Sound] menu.

**1 | Setting EQ function**

Press and hold the MENU button to display function control.

**2**

Press << / >> to select [Setup] then press the MENU button.



Convenient Function

EQ



- 3** Press the **◀▶** button to select [Sound] and press the MENU button to enter the Sound menu.



- 4** Press **◀▶** to select [EQ Select] and press the Menu button.



NOTE | You can select among ROCK, JAZZ, CLASSIC, U BASS, METAL, XTRMEQ, XTRM3D, NORMAL.

Convenient Function

EQ



- 5** Press the **+/-** button to select the desired EQ mode.



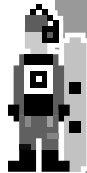
- 6** Once the EQ mode has been highlighted press the MENU button to finish setting this mode.



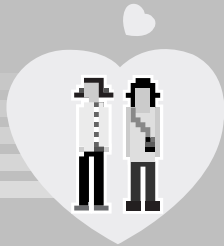
Select



NOTE | You can select among ROCK, JAZZ, CLASSIC, U BASS, METAL, XTRMEQ, XTRM3D, NORMAL. (see page 52 ~ 53).



iriver



Chapter

5



I Menu Setting I

Configuration	40
Selecting Setup Menu	41
Entering Submenu	41
Function Details	42
Exiting Menu	42

Menu-General	43
Menu-Display	44
Menu-Timer	46
Menu-Function	47
Menu-Mode	50
Menu-Sound	52



Menu
Configuration



GENERAL

RESUME
LANGUAGE
LOAD DEFAULT



DISPLAY

BACKLIGHT
LCD CONTRAST
SCREEN SAVER
SCROLL SPEED
TAG INFORMATION
PLAY TIME INFO



TIMER

SLEEP POWER OFF
STOP POWER OFF
SET TIME
SET ALARM



CONTROL

FAST SKIP
FF/RW SCAN SPEED
VOICE RECORDING
MODE
VOICE AUTO DETECT
PLAYBACK SPEED



MODE

PLAY MODE
INTRO
STUDY
NAME



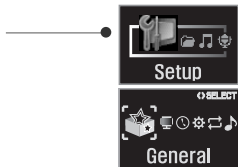
SOUND

EQ SELECT
Xtreme EQ
Xtreme 3D
DBE SETTING
3D EQ SETTING
SOUND BALANCE
EQ LIMIT
BEEP VOLUME
SOUND FADE IN

Selecting Setup Menu



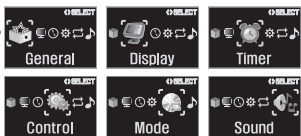
- 1 | Displaying MENU SETTING screen**
Press and hold the MENU button, and Press **◀◀ / ▶▶** to select [Setup] and press the MENU button.



- 2 |** Press **◀◀** or **▶▶** to select [Setup] and press the MENU button.



- 3 | Switching Menu**
Press **◀◀ / ▶▶** to cycle through the six main menus. Press MENU or PLAY/STOP to enter any of them main menus.



Entering Submenu



- 1 | Displaying submenu**
Select the desired menu and press the MENU button to view its sub-menu.



- 2 | Switching submenu**
Press + / - to move up and down the sub-menu.
+ : Moves to previous submenu
- : Moves to next submenu



Menu

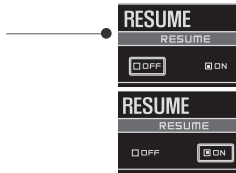
Function Details



- 1 | Display function details**
Select the desired function from the sub-menu and press MENU button to display that functions details.



- 2 | Changing setting**
Press the + / - button to cycle through all the setting options.



Menu

Exiting Menu



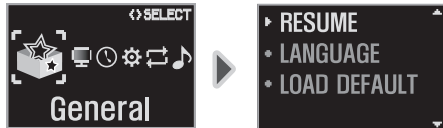
- 1 | Exiting submenu**
Once the desired setting is chosen, press the PLAY/STOP button to exit back to the previous menu and save the current setting.



- 2 | Exiting main menu**
Press the PLAY/STOP button again to exit the current sub-menu.



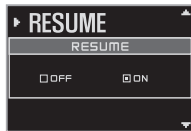
Menu-General



1 | RESUME

ON : Playback resumes from the previous location in a song when the player is stopped or powered off.

OFF : Playback begins from the first track after the player is stopped or powered off.



Menu-General

2 | LANGUAGE

Supports 40 languages.

Song title and ID3 tag information is dependent on the version of the PC operating system that was used to create it.

- For example, if an MP3 file is created in a English version of Windows, the language setting should be English for the proper title display.)



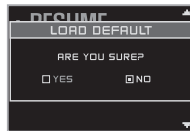
3 | LOAD DEFAULT

Initialize menus to the original factory settings.

Press the <MENU> button and select [Load Default] menu.

Press the <⏪> button and select [YES].

Press the <PLAY/STOP> button and select [YES] to initialize all settings.



Menu
MENU-Display



1 | **Back-Light**

You can adjust the time that the Backlight stays on.
 Sec : The backlight stays on from 3 to 30 seconds.
 Min : The backlight stays on from 1 to 30 minutes.
 Always: The backlight will remain on while player is powered on.
 Press the <MENU> button to set Sec/Min/Always.

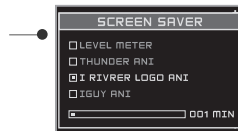


Menu
MENU-Display

2 | **LCD CONTRAST**
 Adjust LCD contrast by setting 0 ~ 40.



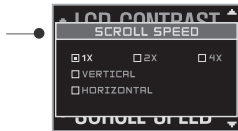
3 | **SCREEN SAVER**
 A graphic will display on the LCD screen of the player after a set amount of time during music playback.
 Activation time can be set from 0 (off) to 180 minutes.



MENU-Display**4 | SCROLL SPEED**

Adjust scroll speed by 1x/2x/4x/VERTICAL/HORIZONTAL.

- VERTICAL : The scroll goes up and down.
- HORIZONTAL : The scroll goes from left to the right.

**5 | TAG INFORMATION**

On : Display track with ID3 tag information.

Off : Display track with file name.

- File name will be displayed by default for songs with no ID3 information

**MENU-Display****6 | PLAY TIME INFO**

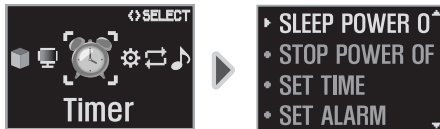
Normal : display elapsed time.

Remaining : display remaining time.

Time display may not be accurate for files encoded in Variable Bit Rate formats.



Menu

MENU-Timer**1 | SLEEP POWER OFF**

Automatically turns the power off after a fixed time. (Time range can be set from 0 to 180 minutes by one minute increments.)

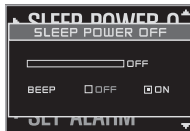
Use the <⏪ / ⏩> switch to adjust time.

Set BEEP ON/ OFF by pressing the <MENU> button.

BEEP ON : A beep sound will play 1 minute before power off.

BEEP OFF : No beep sound is played.

- Once powered off, the sleep timer will reset to 0.



Menu

MENU-Timer**2 | STOP POWER OFF**

The player will power off after a specific time of inactivity (not playing music, recording, etc.).

1 - 60 minutes in 1 minute increments.

**3 | Set Time**

Set the current date and time for the player.



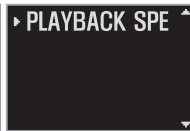
MENU-Timer**4 | SET ALARM**

The Alarm setting will power on the player at a specific time and play through the headphones.

Press <⏮ / ⏭> to select each item then +/- to adjust each.

DAY : Alarm rings at the set time of the set day repeatedly.

ALL : Alarm rings at the set time everyday.

**MENU-Control****1 | FAST SKIP SKIP**

OFF : Skip doesn't activate.

10 : Skip 10 tracks at time.

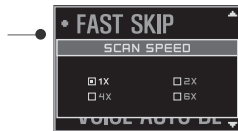
DIRECTORY : Skip to previous or next folder.



Menu

MENU-Control**2 | FAST SKIP SCAN SPEED**

You can set fast scan speed into 1X / 2X / 4X / 6X,



Menu

MENU-Control**3 | VOICE RECORDING MODE**

You can adjust recording quality when recording voice.

AGC ON : When recording voice, the recording level is automatically controlled and recordings from long distances are enhanced.

AGC OFF : AGC(Automatic Gain Control) not activated.

QUALITY : Controls voice recording quality as quality.



MENU-Control

4 | VOICE AUTO DETECT

The voice recording mode will automatically pause during silence. This is useful for recording over a long period of time to save memory.

OFF : Voice Auto Detection is disabled.

DETECTION LEVEL : Set the relative level of sound needed to activate the recorder. (Level 1- Level 10).

Record pause time : Set the number of seconds of silence to record before pausing. (1-10 sec)
(second slider)



MENU-Control

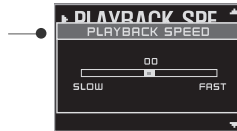
5 | PLAYBACK SPEED

You can set the playback speed for currently playing track to "slow" or "fast" from -9 to +9 speed level.

-9 : Very slow

0 : Normal

+9 : Very fast



Menu MENU-Mode



1 REPEAT/SHUFFLE

Set the desired REPEAT/SHUFFLE play mode. Use +/- to select the mode and press MENU button to save your selection. (Refer to page 35 for a description of each mode.)



Menu MENU-Mode

2 INTRO

OFF : Disables INTRO.
ON : Plays the beginning 10 seconds of each track.
HIGHLIGHT : Plays 10 seconds from 1 minute into each track in sequential order.



3 STUDY

While playing, short slide of the < ⏮ / ⏭ > lever will skip the current track set time ahead or back.
OFF : Study Mode is disabled.
The range is 1~60 seconds.



MENU-Mode

4 | NAME

You can input your name or custom text. The saved text is displayed when playback stops.



1 Select Character



2 Move cursor



3 Select character



4 Delete character



5 Change Character Set



6 Save and Exit



Menu

MENU-Sound



1 EQ SELECT

Select EQ type.

Use the **◀◀ / ▶▶** or **+ / -** button to select EQ type and press the "MENU" button to set it.



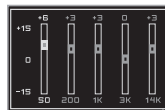
Menu

MENU-Sound

2 Xtreme EQ

You can adjust the sound to your preference.

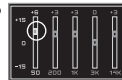
There are 5 band frequency steps, set from -15dB to +15dB by 3dB step.



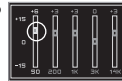
How to set Xtreme EQ



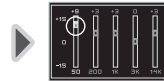
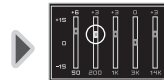
1. Select the frequency.



2. Adjust the level.



3. Save the setting and exit.



MENU-Sound

3 | Xtreme 3D

You can adjust the level of 3D sound (minimum, Natural, and Maximum). You can extend 3D sound by selecting Bass Boost or 3D EQ. You can also adjust the level of 3D sound with the **◀▶** / **▶▶** (or +,-) lever.

Select DBE or 3D EQ with the <MENU> button.



4 | DBE SETTING

You can select the Bass Center Band level from Band 1 to 4. You can also set the Bass Boost gain from 0 dB to 15dB by 3dB step.

DBE (Dynamic Bass Enhancement) enhances Low & Middle frequencies and only operates when using Xtreme 3D.

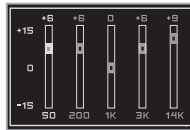


MENU-Sound

5 | 3D EQ SETTING

You can adjust the sound to your preference.

There are 5 band frequency steps, set from -15dB to +15dB by 3dB step.



6 | SOUND BALANCE

Balance your sound to the right or left or keep it in the center according to your preference. When Sound Balance bar is moved to L (Left, 20), the sound outputs at the left earphone. When the lever is moved to R (Right, 20) the sound outputs at the right earphone.

The default value is 0 and the sound outputs the same level at both earphones.



Menu

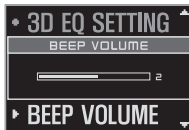
MENU-Sound**7 | EQ LIMIT**

ON : Limit the control of equalizer frequency to prevent distortion of sound.

OFF : You can enjoy the original sound though distortion of sound may occur.

**8 | BEEP VOLUME**

Set beep volume "ON/OFF" or level.
Set to "0" for OFF.



Menu

MENU-Sound**9 | SOUND FADE IN**

When activated, volume increases gradually at playback mode to prevent the sudden loudness.



Chapter

6



I Using iriver Music Manager I

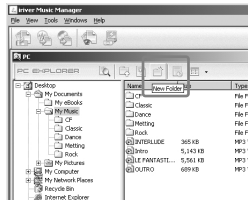
Managing File/Folder	56
Views	66
Wizard	68
Performance Maintenance	74
Additional Features	76
Using Help	77

iriver Manager for Mac OS	80
-------------------------------------	----

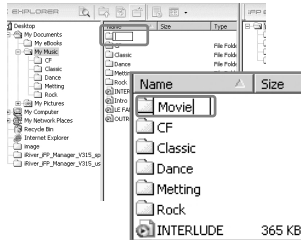


Making a New Folder on the PC

1 Click the "New Folder" icon or select "File-New folder" in the file menu to make a new folder.

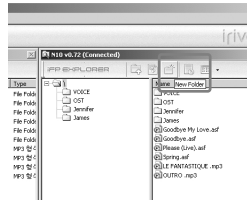


2 A new folder is created. Type the name in the new folder and press "Enter".

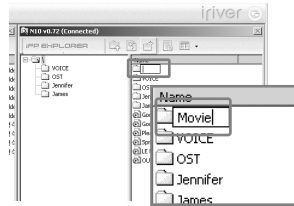


Making a New Folder on the Player

1 Click the "New Folder" icon or select "File-New folder" in the file menu to make a new folder.



2 A new folder is created. Type the name in the new folder and press "Enter".

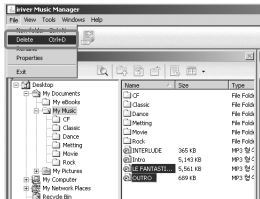
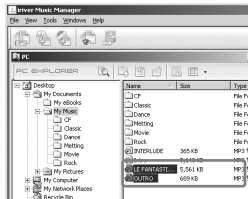


Only 8 levels of subfolders are allowed, beginning with the Root (\) folder.

Deleting Folders or Files from the PC

1 Select the files or folders to delete.

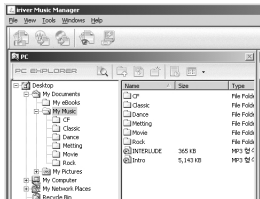
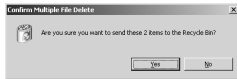
2 Select File - Delete in the file menu to delete files.



Deleting Folders or Files from the PC

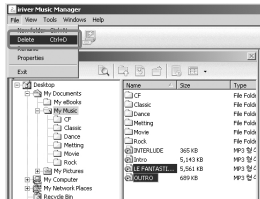
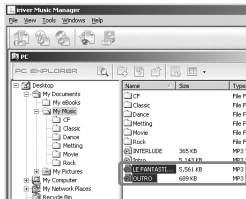
3 Click "Yes" on the alert display to delete.

4 Files are deleted.



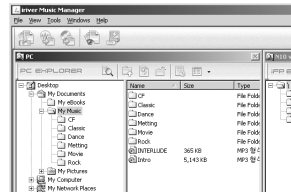
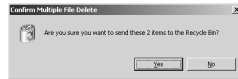
Deleting Folders or Files from the Player

- 1 Select the files or folders to delete.
- 2 Select File - Delete in the file menu to delete files.



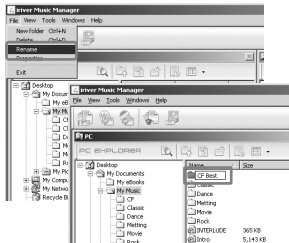
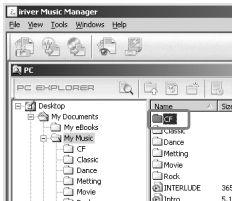
Deleting Folders or Files from the Player

- 3 Click "OK" on the alert display to delete.
- 4 Files are deleted.



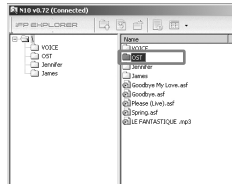
Using iriver Music Manager - Managing File/Folder Renaming Folder or File on the PC

- 1 Select file or folder to rename.
- 2 After selecting File - Rename, type the new name and press "Enter".

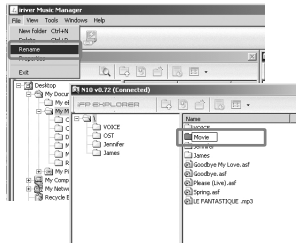


Using iriver Music Manager - Managing File/Folder Renaming Folder or File on the Player

- 1 Select file or folder to rename.
- 2 After selecting File - Rename, type the new name and press "Enter".

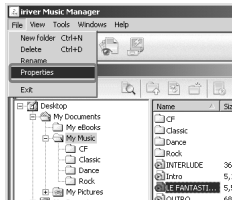
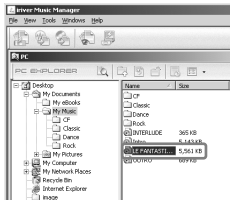


You cannot change the extension of a file.



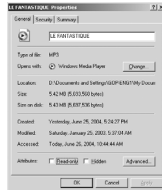
To view the Properties of a File (PC)

- 1 Select a file or folder to view.
- 2 Select "File" - "Properties" in the file menu to view the properties of the file.



To view PC Properties

- 3 The properties of the selected file are displayed.



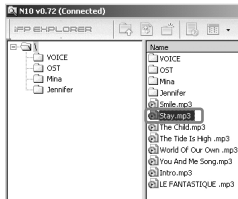
<Properties of selected file>



<Properties of selected folder>

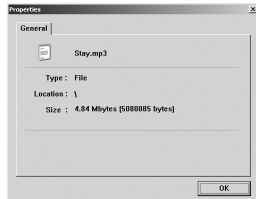
To view the Properties of a File (Player)

- 1 Select a file or folder to view.
- 2 Select "File" - "Properties" in the file menu to view the properties of the file.



To view the Properties of a File (Player)

- 3 The properties of the selected file are displayed.

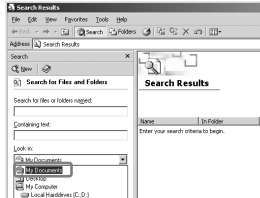
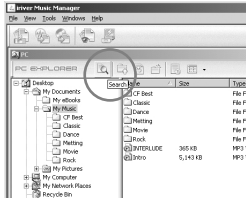


<Properties of selected folder>



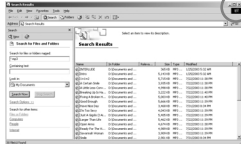
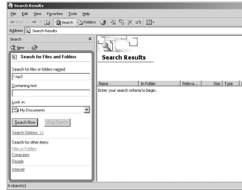
Searching for Music Files

- 1 Click "Search" icon on the PC window.
- 2 Select the drive or folder to search.



Searching for Music Files

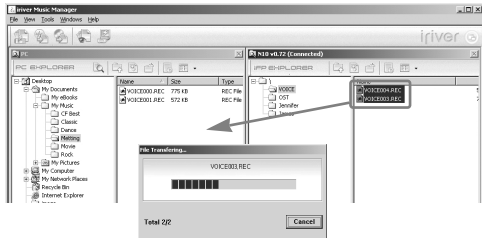
- 3 Click "Search" after typing the searching condition.
- 4 The search results are displayed. Click "Close" button to finish.



Search interface may look different depending on your Windows version.

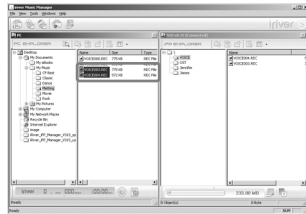
Uploading to the PC

- 1 Select the folders or files on the player to transfer to the PC.
Click and drag to move folders or files to the desired location on the PC.
Upload is in processing.



Uploading to the PC

- 2 Upload is completed.

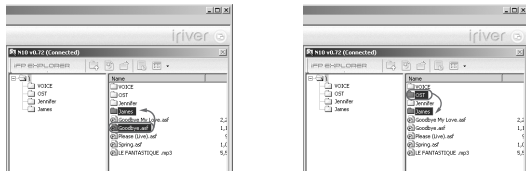


- ⚠ Music files (MP3, WMA, ASF) cannot be uploaded from the player to the PC in accordance with current copyright guidelines.
- ⚠ You can upload pictures, recorded files, or any data files to your PC.
- ⚠ MP3, WMA or ASF files may not be transferred to your PC from the player.



Changing the Position of Folders or Files on the Player

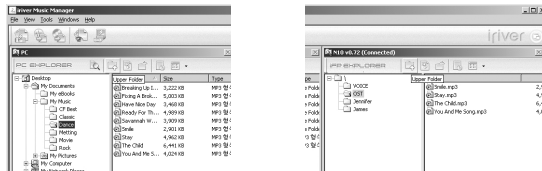
- 1 Drag and drop to move a folder or file to the desired location.



- || You may only move one file or folder at a time.
- || You cannot move files or folders to another folder.
- || Click [Name] in player window to sort files by name.

Moving to the Upper Folder (PC and Player)

- 1 Click the move to "upper folder" icon in the menu bar of the iriver Music Manager.

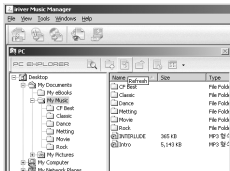


<Move to the upper folder on the PC>

<Move to the upper folder on the player>

Refresh (PC and Player)

- 1 Click the "Refresh" icon to display the contents of the PC or the player.



<Refresh to the current folder on the PC.>



<Refresh to the current folder on the player.>

Note ...

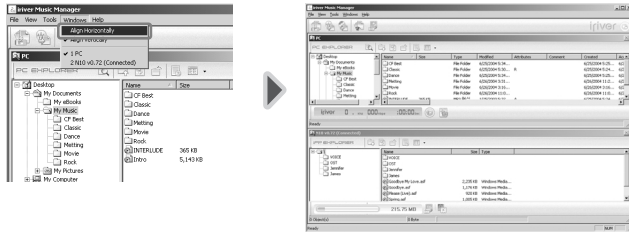


iriver

Using iriver Music Manager - Views

Windows

- 1 Select "Align Horizontally" in the Windows menu to display the PC and player s windows horizontally.



Using iriver Music Manager - Views

Windows

- 2 Select "Align Vertically" in the Windows menu to display the PC and player windows Vertically.



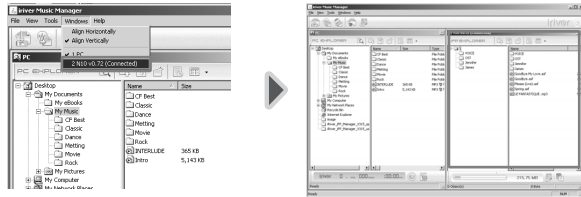
Using iriver Music Manager - Views Windows

- 3 To make the PC side of iriver Manager active, click Window - PC



Using iriver Music Manager - Views Windows

- 4 To make the player side of iriver Manager active, click Window - N10(: model name)
v3.15(Connected)(: firmware version)

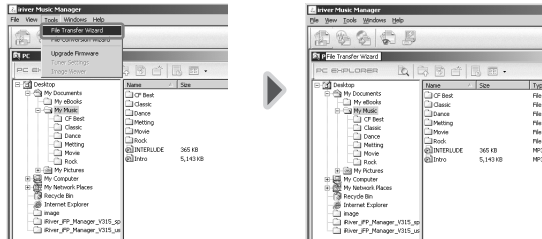


Using iriver Music Manager - Wizard

File Transfer Wizard

The file transfer wizard can help guide you through the process of copying songs to your player.

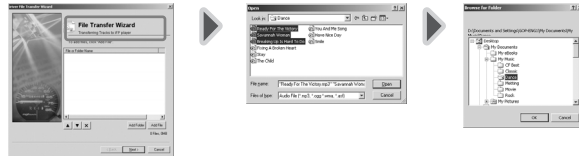
- 1 Click "Tools-File Transfer Wizard" on the menu or "File Transfer Wizard" icon on the Toolbar menu files or folders.



Using iriver Music Manager - Wizard

File Transfer Wizard

- 2 File Transfer Wizard window is displayed on the PC. Click "Add Folder" or "Add File" after selecting folder or file to transfer.

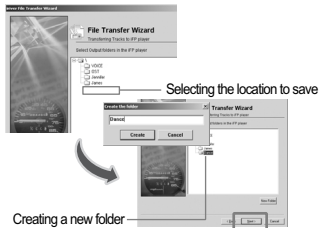


Using iriver Music Manager - Wizard File Transfer Wizard

- 3 Click "Next" after selecting files or folders.



- 4 Click "Next" after selecting the folder to be transferred to the player or creating a folder on the player.



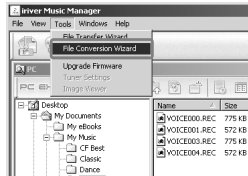
Using iriver Music Manager - Wizard File Transfer Wizard

- 5 File transferring is in processing. Click "Finish" after completing file transferring.

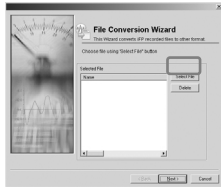


Using iriver Music Manager - Wizard File Conversion Wizard

- 1 Click "Tools-File Conversion Wizard" on the menu or "File Conversion Wizard" icon on the Toolbar menu files to convert REC files to MP3 format.



- 2 File Conversion Wizard window is displayed. Click "Select File" to select the file to convert.



Using iriver Music Manager - Wizard File Conversion Wizard

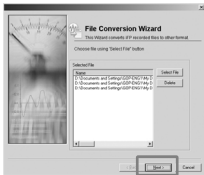
- 3 Click "Open" and "Next" after selecting files.
- 4 To cancel the file conversion, click "Delete" after selecting files to cancel.



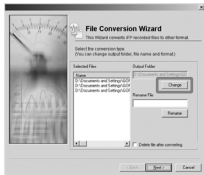
Caution You must first upload REC files from the player to your PC before converting them.

Using iriver Music Manager - Wizard File Conversion Wizard

- 5 Click "Next" after confirming the selected files.

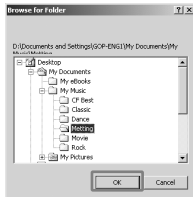


- 6 Click "Change" to change the location to save after converting.

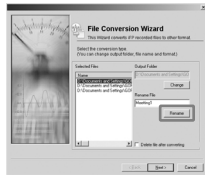


Using iriver Music Manager - Wizard File Conversion Wizard

- 7 Click "OK" after selecting the location to save after converting.

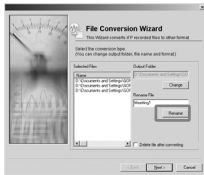


- 8 Click "Rename" after selecting the file to be renamed.



Using iriver Music Manager - Wizard File Conversion Wizard

9 Click "Next" after typing new file name.

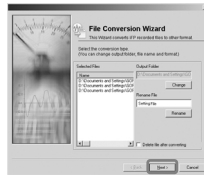


10 Click "OK" to confirm it.



Using iriver Music Manager - Wizard File Conversion Wizard

11 Click "Next" after selecting whether deleting or not the original file.

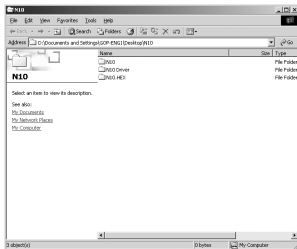


12 File converting is in processing.
Click "Finish" after completing file conversion.



Firmware Upgrade (Manual)

- 1 Visit www.iriver.com to download the latest firmware for your player. Unzip the downloaded firmware file and double click the EXE file. A file called N10.HEX will be created in the same folder as the EXE file.



Firmware Upgrade (Manual)

- 2 Click "Tools-Firmware Upgrade" or "Firmware Upgrade" icon on the Toolbox.



- 3 Click "Upgrade".

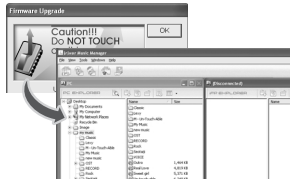


Firmware Upgrade (Manual)

- 4 Locate and select the "N10.HEX" then click "Open".



- 5 The window below is displayed as the firmware upgrade is in processing. Click [OK] after the player turns off.

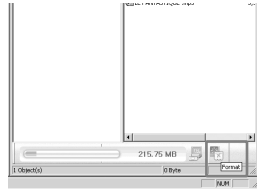


Do not disconnect the player from the PC or remove the battery from the player during the firmware upgrade process.

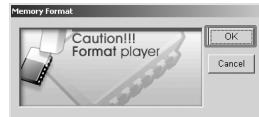
Format

Format will erase all the files and folders in your player's memory.

- 1 Click the "format" icon on the Toolbox to format.

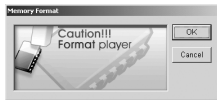


- 2 The alert below is displayed. Click "OK" to initialize.



Format

3 Formatting is in processing.



4 Formatting is completed. Click "OK".



Note ...



iriver



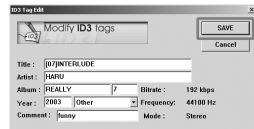
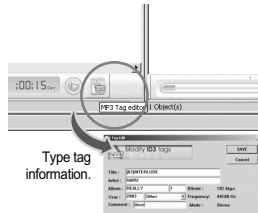
Playing Music Files on the PC

- 1 Click "Musik Play" icon after selecting a file to play.
- 2 When you play a file, your default media player will open and begin playing the selected song.



Modifying ID3 tags

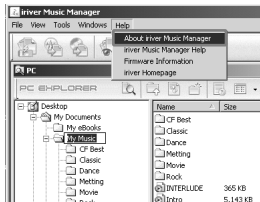
- 1 Click "Modify ID3 tags" icon after selecting a MP3 file .
- 2 Click [Save].
Modifying of ID3 tags is completed.



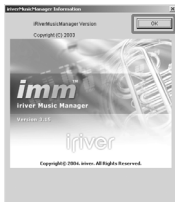
You can only modify the tag information of MP3 files and only files that are on your PC.

Using iriver Music Manager - Using Help iriver Music Manager Help

- 1 Click "Help - About iriver Music Manager".



- 2 The version information of iriver Music Manager is displayed. Click "OK" to exit.

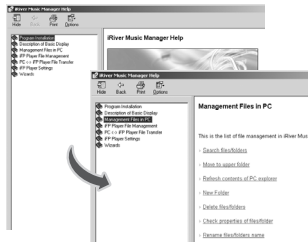


Using iriver Music Manager - Using Help iriver Music Manager Help

- 1 Click "Help - iriver Music Manager Help" in the menu.

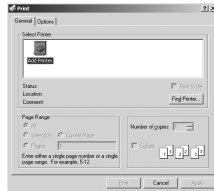
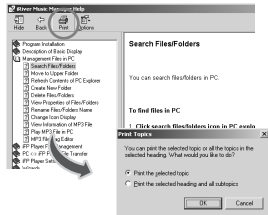


- 2 Help screen about how to use "iriver Music Manager" program is displayed. Click head heading to read the details of the iriver Manager functions.



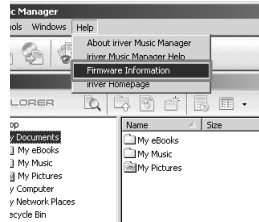
Printing iriver Music Manager Help

- 1 Click "Print" icon to print iriver Music Manager Help. Click "OK" after selecting the range to print.
- 2 Click "Print" after selecting the printer. Printing is started.



Viewing Firmware Information

- 1 Select "Help-Firmware Information" in the menu.
- 2 Information about Firmware is displayed. Click "OK" to exit.



Using iriver Music Manager - Using Help
Connecting to iriver Website.

- 1 Click the Icon to connect to iriver Website.



Note ...



iriver



Mac Software Installation (Mac OS 9.2)



System Requirements (Mac)

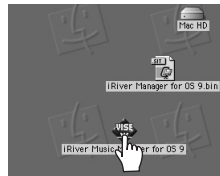
- Mac OS 9.2.2 or later
- Mac OS X 10.2 or later
- CarbonLib 1.6 or later

CarbonLib Update Method

- OS X : Apple Menu - System Preferences - System - Software Update
- OS 9 : Control Panels - Software Update

Mac Software Installation (Mac OS 9.2)

- 1 Copy the "MAC OS - OS 9 - iriver MUSIC MANAGER FOR MAC OS-9.BIN" file on the installation CD-ROM in the MAC-OS folder to your desktop.
- 2 Double click the "iriver MUSIC MANAGER FOR OS 9.BIN" file to extract the VISE installation file for iriver Music Manager.



Mac Software Installation (Mac OS 9.2)

- 3** Double click the VISE icon to begin the installation.



- 4** Click "Install" after selecting the folder to install.



Mac Software Installation (Mac OS X)

- 1** Double click the "MAC OS - OS X - iriver Music Manager for OS X.dmg" in the MAC-OS folder on the installation CD-ROM." The ".dmg" file will mount a temporary "drive" icon called "iriver Music Manager".



- 2** Open the iriver Music Manager "drive" and move the iriver Music Manger icon to your Dock or Desktop. Installation of iriver Music Manager for OS X is completed.



Using iriver Music Manager

Connecting to a Mac

- 1 Connect player to your Mac, and then run iriver Music Manager icon on Desktop.



Using iriver Music Manager

Using iriver Music Manager on Mac

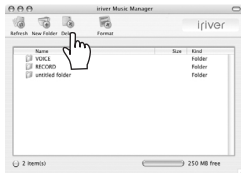
- 1 **Adding new folder**
Click New Folder icon in iriver Music Manager.
- 2 **Refreshing Player**
Click "Refresh" icon to display the contents of the player.



Using iriver Music Manager on Mac

3 | Deleting file or folder

After selecting the files or folders to delete, click "Delete" icon to delete.



4 | Formatting Playe

Format will erase all files in your player memory. Click the "Format" icon to format.



Using iriver Music Manager on Mac

5 | Downloading from the Mac

After selecting the files or folders to download, drag and drop them to the iriver Music Manager screen. The selected songs will automatically download to the player.



- Files with a name over 127 English characters (double byte: 63 characters) will not transfer.
- Files over 511 English characters (including path name and file names) will not transfer.
- The ROOT folder is limited to 1024 files and folders total. Subfolders do not have a limit to the number of files.

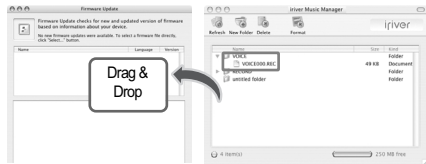


Using iriver Music Manager

Using iriver Music Manager on Mac

6 | Uploading to the Mac

After selecting the files or folders to upload, drag and drop them to the folder to upload on the Mac.



! Music Files (MP3, WMA, ASF) can not be uploaded from the player to the Mac in accordance with current copyright guidelines.

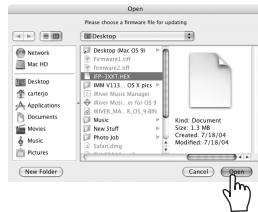
! REC files will be automatically converted to WAV format when uploaded to your computer.

Using iriver Music Manager

Firmware Upgrade

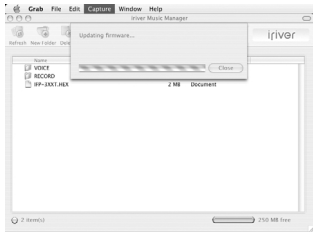
1 Download the latest Firmware from our website. Click "File - Firmware Update" on the menu.

2 Click "Open" after selecting file to update.



Using iriver Music Manager Firmware Upgrade

- 3 While update is completed, the player is automatically turned off.



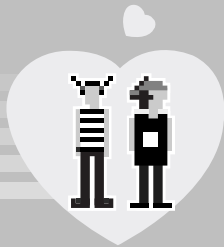
Note ...



iriver



iriver



Chapter

7



I Additional Information I

Precautions 88

Troubleshooting 91

Specifications 92



Additional Information - Safety and Warning

Precautions Be sure to read for your safety.

Do not place objects inside the device.

- Damage to your player may result from improper use.



Do not place heavy objects on the device.

- Damage to your player may result from improper use.



Keep away from harsh environments including humid, dusty, and smoky areas.

- Damage to your player may result from improper use.



Additional Information - Safety and Warning

Precautions Be sure to read for your safety.

Avoid contact with water and other liquids and dry immediately with a soft cloth should contact occur.

- Damage to your player may result from improper use.



Do not use water or chemicals to clean the player. Clean the surface with a soft cloth.

- Damage to your player may result from improper use.



Do not use chemicals and detergents since they deteriorate and peel off product's skin.

- Damage to your player may result from improper use.



Precautions

Be sure to read for your safety.

Do not use excessive force on the buttons or attempt to disassemble the device.

- Damage to your player may result from improper use.



Keep out of direct sunlight and extreme heat and cold.

- Damage to your player may result from improper use.



Do not drop or subject the device to impact.

- Damage to your player may result from improper use.



Precautions

Be sure to read for your safety.

Keep the player away from strong magnets.

- Damage to your player may result from improper use.



Do not disassemble or modify.

- Damage to your player may result from improper use.



Additional Information - Safety and Warning

Precautions

Be sure to read for your safety.

Reduce volume while walking, especially at pedestrian crosswalk.



Do not use headphone / earphones at high volume. Hearing experts advise against listening to continuous, loud and extended play.

- It may cause your injured.



Reduce volume or stop using the player if you experience ringing in your ears. Hearing experts advise against listening to continuous, loud and extended play.



Additional Information - Safety and Warning

Precautions

Be sure to read for your safety.

Do not use at high volume for continuous listening. Hearing experts advise against listening to continuous, loud and extended play.



Included earphones include soft covers for your comfort. They may be used with or without covers at your preference.



Keep headphones / earphones cords under control at all times.

- Cords may get caught on a variety of objects and cause damage or injury.



Troubleshooting

Trouble	Solution
No Power.	<ul style="list-style-type: none"> ● Check if battery is charged.
No sound or distortion during playback.	<ul style="list-style-type: none"> ● Check if volume is set to "0". ● Check whether the plug is dirty. Clean the plug with a dry and soft cloth. ● Corrupted music files may make a static noise and the sound may cut off. Listen to your files on the PC to see if they are corrupted.
Abnormal characters in Screen.	<ul style="list-style-type: none"> ● Go to [Menu Setting] - [General Setting] - [Language] and check if language is correctly selected. (refer to page 43)

Troubleshooting

Trouble	Solution
Failed download of MP3 file	<ul style="list-style-type: none"> ● Check if battery is charged. ● Check if USB cable between PC and your player is correctly connected.
Player will not charge.	<ul style="list-style-type: none"> ● Battery may be fully charged. A fully charged battery will not accept additional charging. ● Check if USB cable is correctly connected.



Additional Information

Specifications

Category	Item	Specifications		
Audio	Frequency Range	20 Hz ~ 20 KHz		
	Headphone Output	(L)18 mW + (R)18 mW (16Ohm) max. Volume		
	S/N Ratio	90 dB(MP3)		
File Type	File Type	MPEG 1/2/2.5 Layer 3, WMA, ASF		
	Bit Rate	8 Kbps ~ 320 Kbps		
	Tag Info	ID3 V1, ID3 V2 2.0, ID3 V2 3.0, ID 3 V2 4.0		
	Display	16 Gray Organic EL Display		
	Language	40 Languages		
Voice Recording		Approx. 9:00 hrs (32kbps, 128 MB)	Approx. 18:00 hrs (32kbps, 256 MB)	Approx. 36:00 hrs (32kbps, 512 MB)
Max. Playtime		Approx. 11 hours (128 kbps, MP3, Volume 20, EQ Normal, LCD off)		
Playtime (Normal Use)		Approx. 7 hours (192 kbps, MP3, Volume 20, EQ Xtreme 3D, After 30 min LCD off)		
Dimensions		27.2(W) x 49.8(D) x 13.3(H) mm (Body)		
		27.2(W) x 62.5(D) x 13.3(H) mm (type A - cap inclusion)		
Weight		22g (Body with Battery)		
		28.5g (Body with Battery, type B - cap inclusion)		
Battery		Lithium Polymer battery		
Operational Temperature		-5 °C ~ 40 °C		

Note ...

iriver