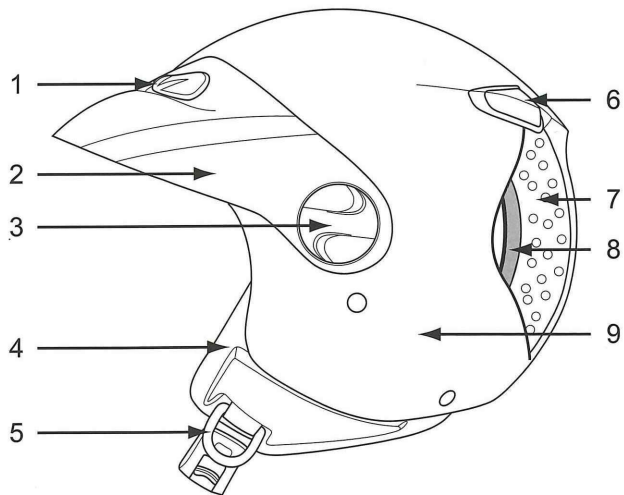


210 SERIES

E13*22R00*22R05*9274*02

Version: 1.0

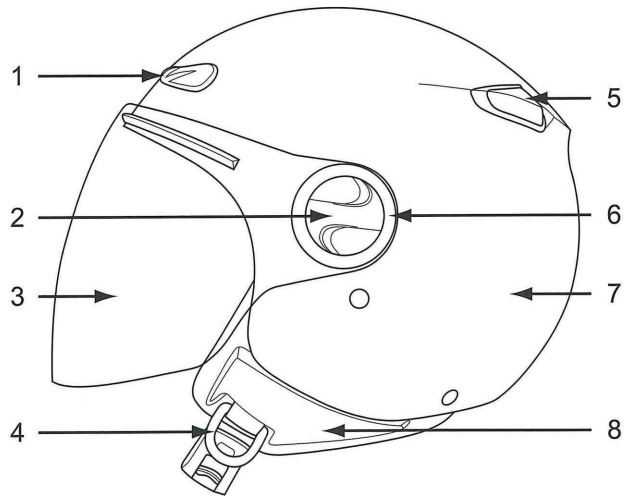
210A



1. FRONT VENT
2. PEAK
3. SIDE SCREW
4. CHIN STRAP PAD
5. BUCKLE

6. REAR VENT
7. SINGLE DENSITY EPS
8. INNER LINER
9. SHELL

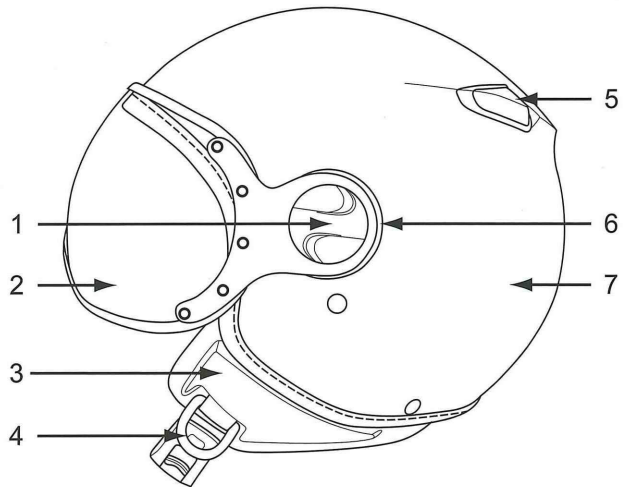
210B



1. FRONT VENT
2. SIDE SCREW
3. VISOR
4. BUCKLE

5. REAR VENT
6. WASHER
7. SHELL
8. CHIN STRAP PAD

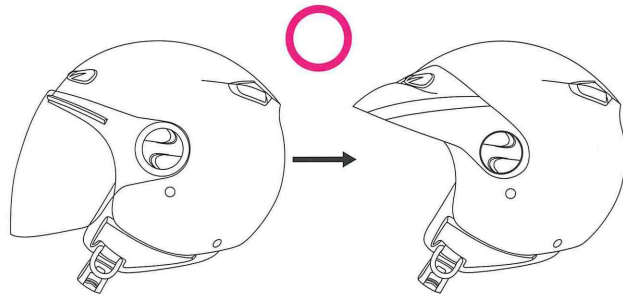
210C



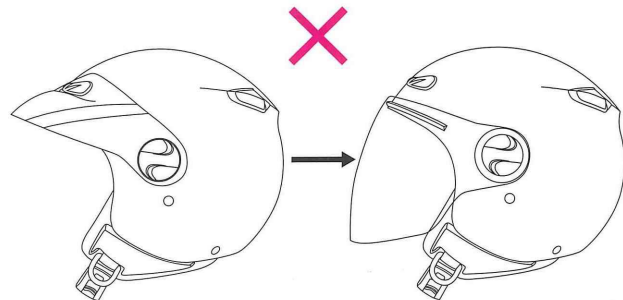
- 1. SIDE SCREW
- 2. VISOR
- 3. CHIN STRAP PAD
- 4. BUCKLE

- 5. REAR VENT
- 6. WASHER
- 7. SHELL

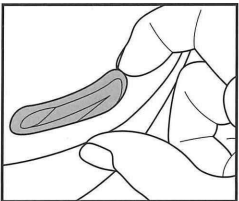
210B can change to 210A



210A cannot change to 210B

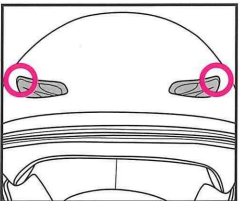


Instruction for removing front vents

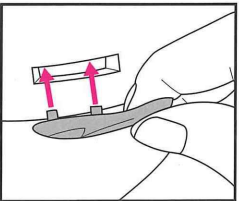


- ① Use your finger nail tip and lift up the front vent.

Instruction for installing front vents

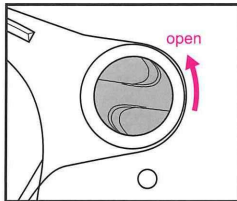


1. First identify the left and right by looking at the thick end pointing upward.



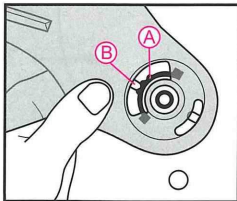
2. Place the front vent anchor legs at the hole on the shell. Then push downward hardy until you hear the 'click' sound.

210B Instruction for removing visor

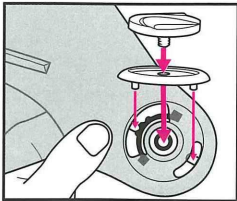


- ① Turn the side screw anti clock wise to remove the screw. Repeat the other side and the visor is release.

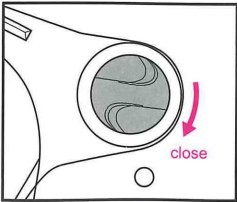
210B Instruction for installing visor



1. Place the visor on the shell's pivot. Make sure the mechanism (A) do not block the hole (B) on the shell.



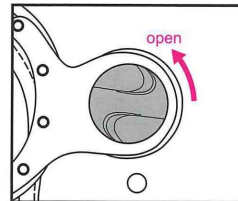
2. Then insert the washer's bosses into the helmet holes. Place the side screw on the top.



3. Lastly, turn the side screws clock wise to tighten.

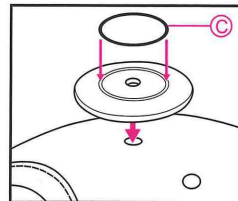
Note: Repeat the same on the other side.

210C Instruction for removing visor

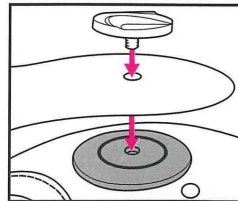


- ① Turn the side screw anti clock wise to remove the screw. Repeat the other side and the visor is release.

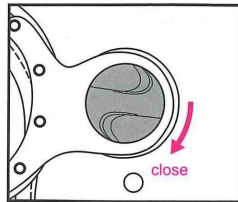
210C Instruction for removing visor



1. First place the washer hole align to the shell pivot hole. Then place the rubber ring (C) on the washer circular drain.



2. Place the visor hole align with the washer hole. Then place the side screw on the top.



3. Lastly, turn the side screws clock wise to tighten.

Note: Repeat the same on the other side.