**Attention**


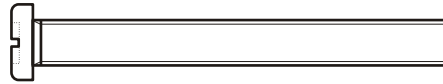
Please write your serial number on the backside of the manual for future reference. The number can be found on the underside of the control panel. OUTDOORCHEF can only supply spare parts and honour warranty returns when the serial number is available.

Achtung


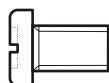
Bitte notieren Sie auf der Rückseite Ihrer Gebrauchsanweisung die Serien-Nummer, welche sich auf der Unterseite der Bedienungskonsole befindet. OUTDOORCHEF kann Garantie und Ersatzteil-lieferungen nur mit der Serien-Nummer behandeln.


BRISBANE 18.378.48



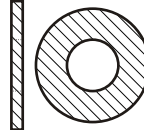
10x **d**  
M6x55

4x **G** 
Protetion Pin

6x **J**  
M6x12

2x **C** 
15x6x1.5

18x **D**  
M5x10

2x **Z** 
17x6.8x1.5 Teflon

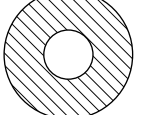
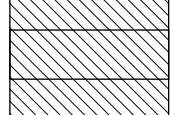
8x **x**  
M6x16

2x **D**  
M3 Nut

2x **h**  
M3x10

1x **J** 

2x **g**  
M4x28

2x **S**  

BRISBANE

Spare Parts

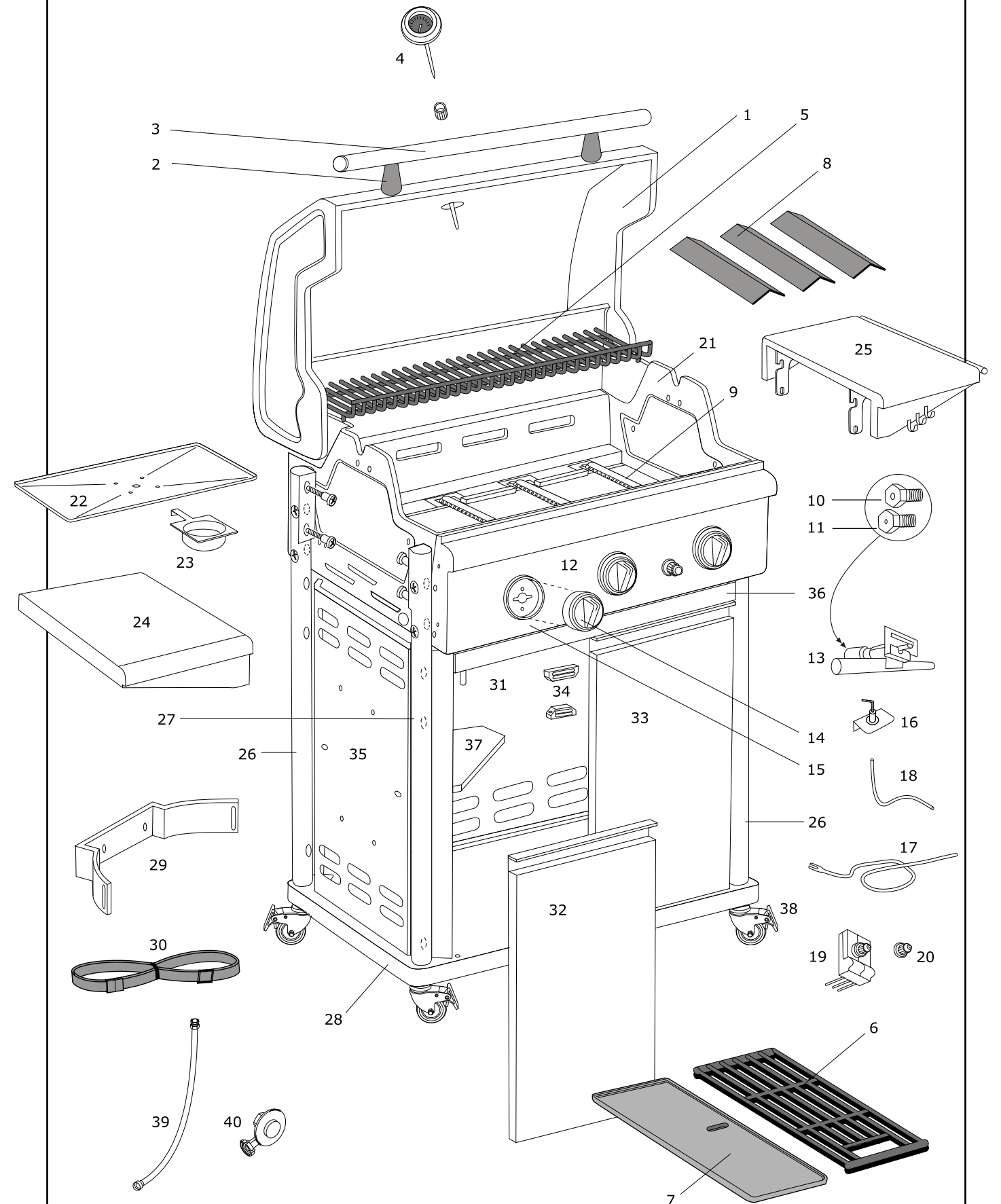
Ersatzteil-Liste

Pos.	Art. Nr.	Description	Beschreibung
1	18.610.00	Lid, black	Deckel, Schwarz
2	18.614.00	Lid handle holder, black	Griffhalterung, Schwarz
3	18.600.00	Lid handle tube, titan-silver	Griffrohr
4	18.850.09	Heat indicator °C/°F	Temperatur Anzeiger °C/°F
5	18.600.01	Warming grid	Warmhalte-Rost
6	18.600.02	Cooking grid	Grillrost
7	18.600.16	Cast Iron plate	Grillplatte
8	18.600.03	Flame protection	Flammenschutz
9	18.612.00	Burner	Brenner
10	18.340.25	Injector 30mbar mark: BK	Düse 30mbar Markierung: BK
11	18.340.26	Injector 50mbar mark: AH	Düse 50mbar Markierung: AH
12	18.600.04	Control panel, titan-silver	Bedienungskonsole, Titan-Silber
13	18.612.02	Valve (single)	Ventil (einzeln)
14	18.614.01	Control knob	Gasregulier-Knopf
15	18.614.03	Gas knob frame main burner	Rahmen für Gasregulier-Knopf Hauptbrenner
16	18.612.01	Piezo electrode	Piezo-Elektrode
17	18.612.21	Ignition wire medium	Zündkabel medium
18	18.612.22	Ignition wire short	Zündkabel kurz
19	18.340.37	Puls ignition	Elektrozündung
20	18.360.22	Push button ignitor	Druckknopf Zündung
21	18.610.02	BBQ base, black	Grill Gehäuse, Schwarz
22	18.600.05	Collection sheet	Fettauffang-Blech
23	18.320.89	Drip pan	Fettauffang-Schale
24	18.600.06	Side table left, black	Seitentablar links, Schwarz
25	18.600.07	Side table right, black	Seitentablar rechts, Schwarz
26	18.600.08	Leg front right/ rear left, titan-silver	Bein vorne rechts / hinten links, Titan-Silber
27	18.600.17	Leg front left, rear right, titan-silver	Bein vorne links, hinten rechts, Titan-Silber
28	18.600.09	Bottom sheet, black	Bodenplatte, Schwarz
29	18.600.25	Bottle fixation, black	Flaschenhalterung, Schwarz
30	18.360.14	Bottle strap	Flaschengurt
31	18.600.15	Rear cabinet sheet, black	Hintere Kastenwand, Schwarz
32	18.600.10	Left door, black	Linke Türe, Schwarz
33	18.600.11	Right door, black	Rechte Türe, Schwarz
34	18.600.26	Door magnet	Türmagnet
35	18.600.12	Cabinet sheet right/left, black	Kastenwand links/rechts, Schwarz
36	18.600.20	Door frame	Türrahmen
37	18.600.21	Cabinet shelf	Kastentablar
38	18.614.02	Caster with brake	Rad mit Bremse
39	19.120.04	Manual	Bedienungsanleitung
40	18.378.48	Hardware set	Schrauben-Set
	19.310.16	Spare parts & Assembly instruction	Aufbauanleitung & Ersatzteilliste
		Gas hose	Gasschlauch
		Gas regulator	Gasdruck-Regler

BRISBANE



THE BARBECUE COMPANY



(ART. No: 19.310.16) BRISBANE 3B /10.12.2008



THE BARBECUE COMPANY

European Outdoor Chef operates a policy of continuous product development and improvement. As such we reserve the right to alter product design and or technical specification without giving any prior notice.