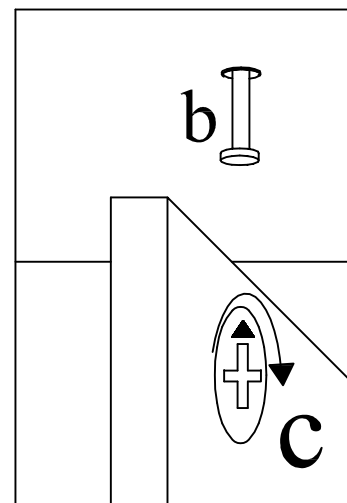
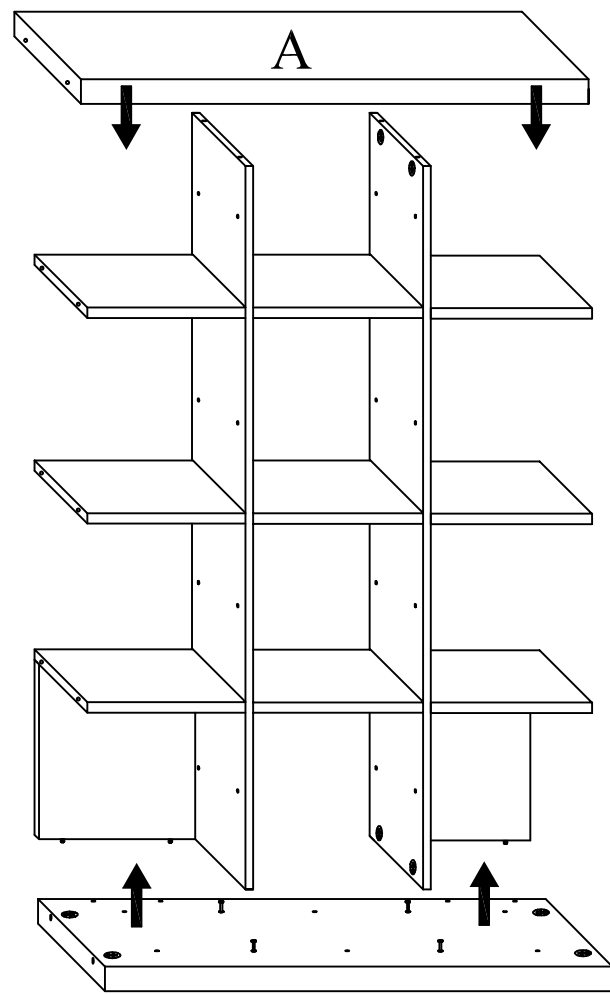
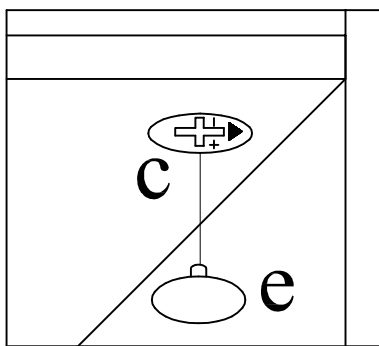
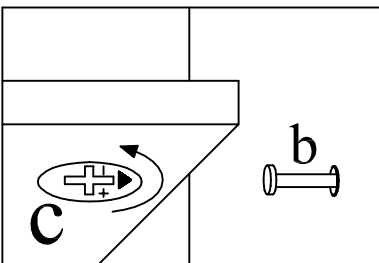
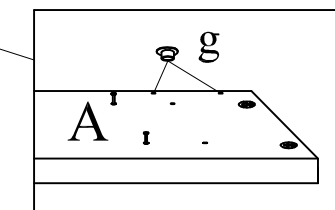
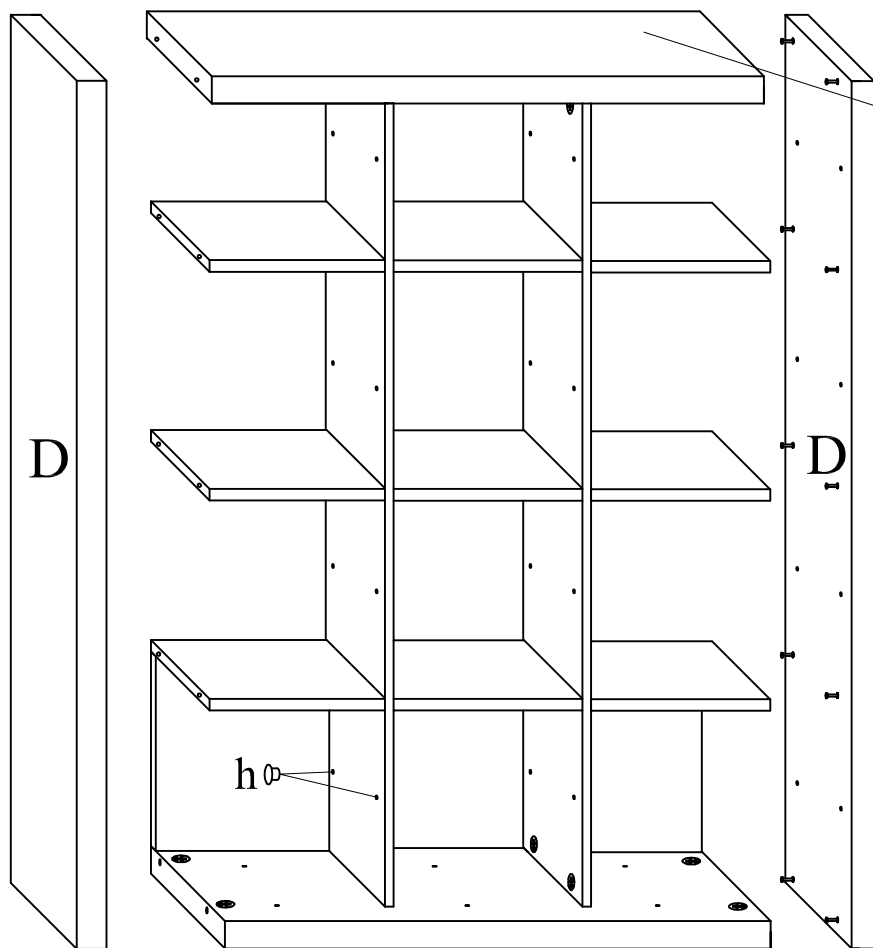


5.



6.

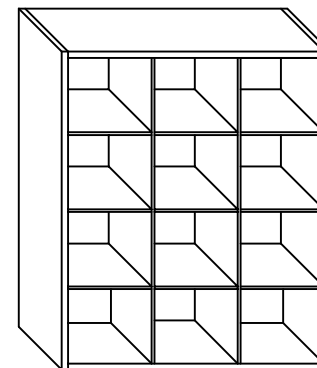


micasa

MONTAGEANLEITUNG:
INSTRUCTIONS DE MONTAGE:
ISTRUZIONI DI MONTAGGIO:

Regal Modell QUADRA

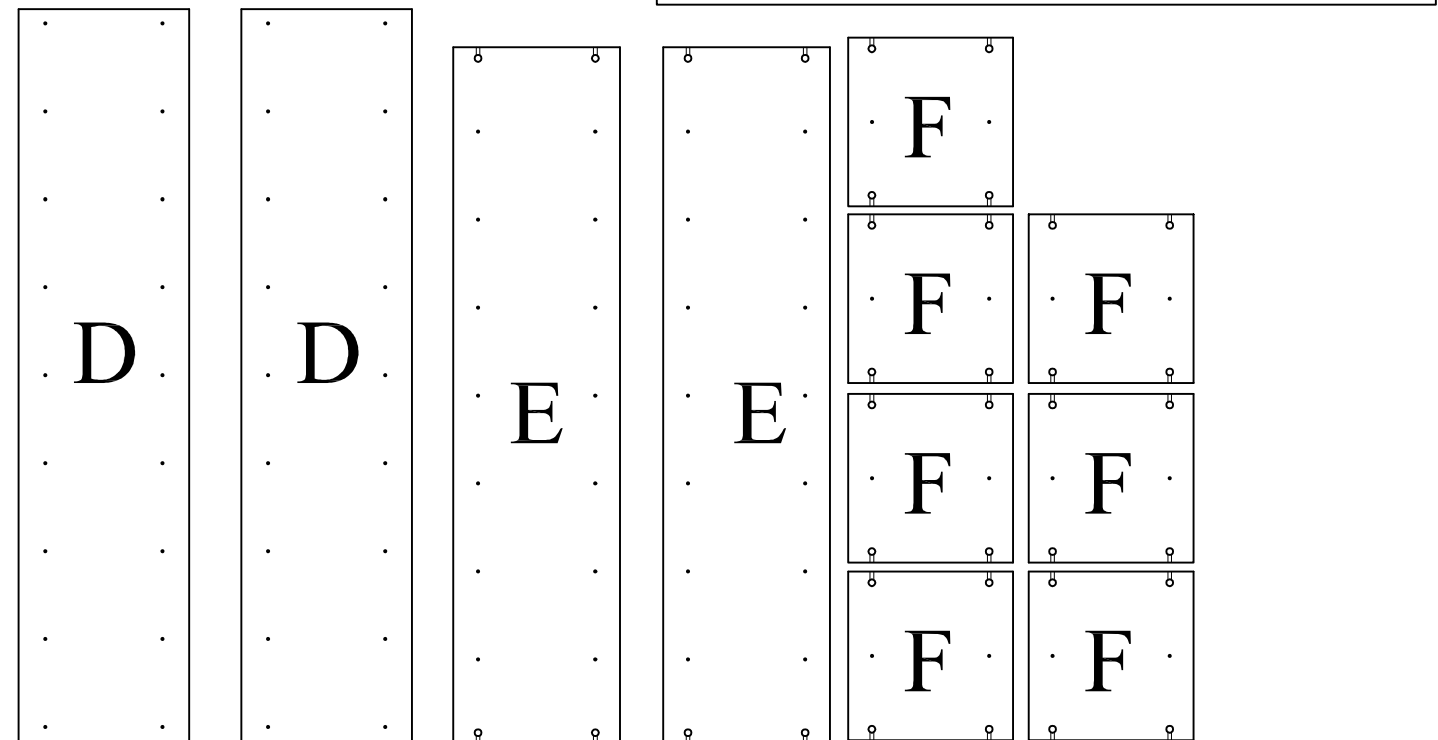
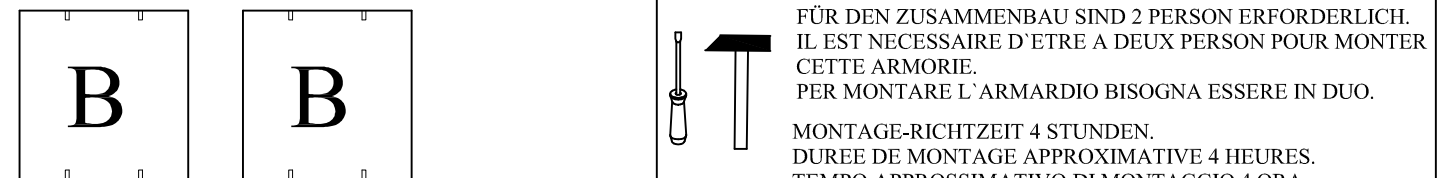
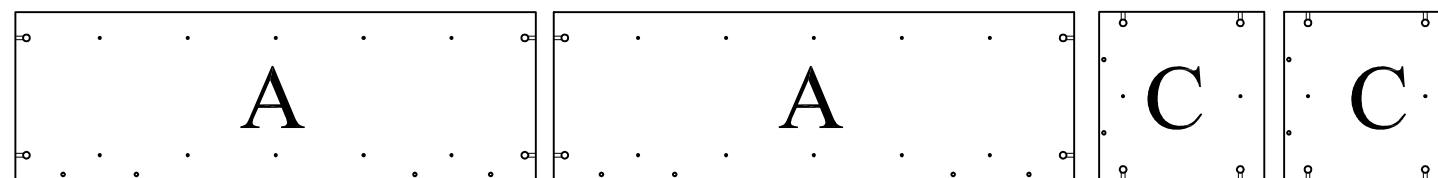
MOT-Z0298S1 A3
Datum 23/05/05



(510-681210)

(510-651210)

- 24 x a 28 x b 52 x c 12 x d
- 52 x e 8 x f 4 x g 36 x h



FÜR DEN ZUSAMMENBAU SIND 2 PERSON ERFORDERLICH.
IL EST NECESSAIRE D'ETRE A DEUX PERSON POUR MONTER
CETTE ARMORIE.
PER MONTARE L' ARMADIO BISOGNA ESSERE IN DUO.
MONTAGE-RICHTZEIT 4 STUNDEN.
DUREE DE MONTAGE APPROXIMATIVE 4 HEURES.
TEMPO APPROSSIMATIVO DI MONTAGGIO 4 ORA.