



4 ×



SCHR. 383

2 ×



BESC. 847

8 ×



BESC. 849
6 × 35 mm

5 ×



SCHR. 396
5 × 40 mm

2 ×



BESC. 772

8 ×



SCHR. 370
M 5 × 25 mm

4 ×



SCHR. 321
M 4 × 9 mm

12 ×



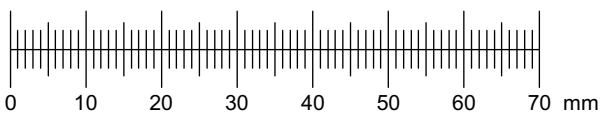
SCHR. 371
6,3 × 12 mm

4 ×



BESC. 770

M: 1:1



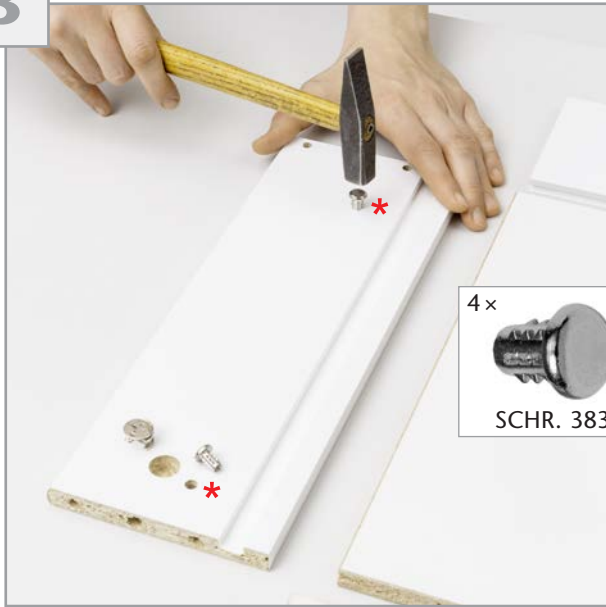
1



2



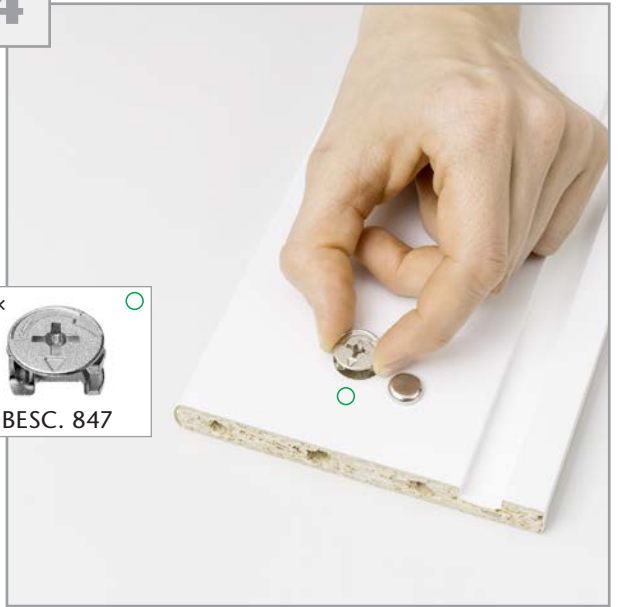
3



4x *

 SCHR. 383

4




2x ○

 BESC. 847

5



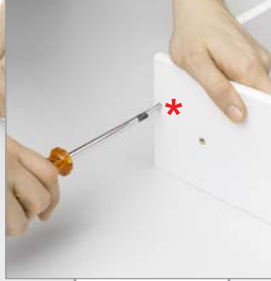
4x *

 BESC. 849

6



2x *

 BESC. 396



7



8



9



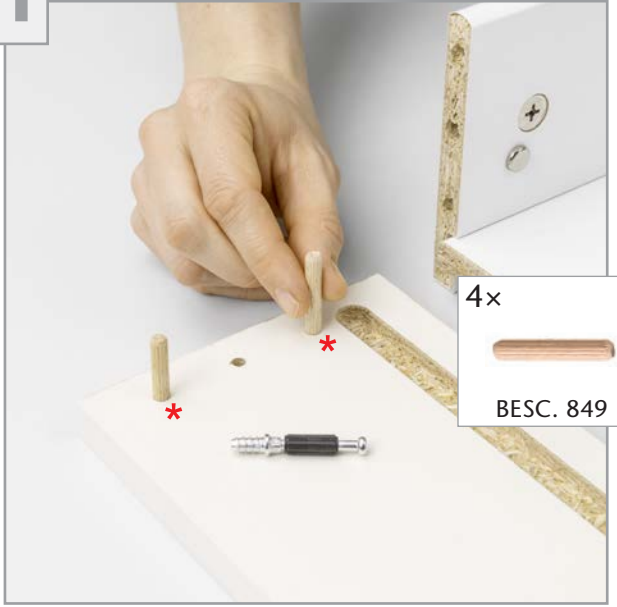
2x *


 BESC. 396

10

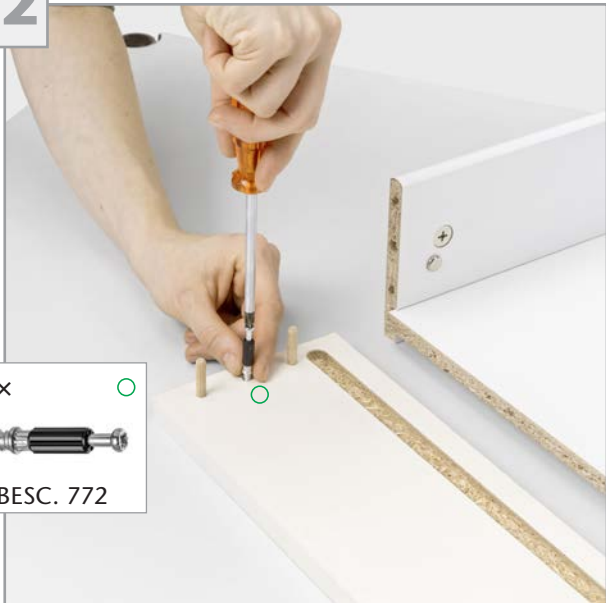


11



4x *

 BESC. 849

12



2x  
 BESC. 772

13



14



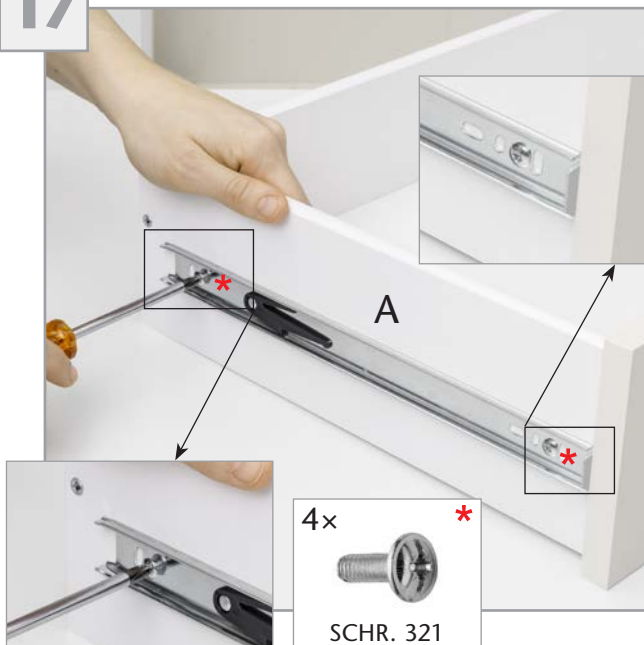
15



16



17

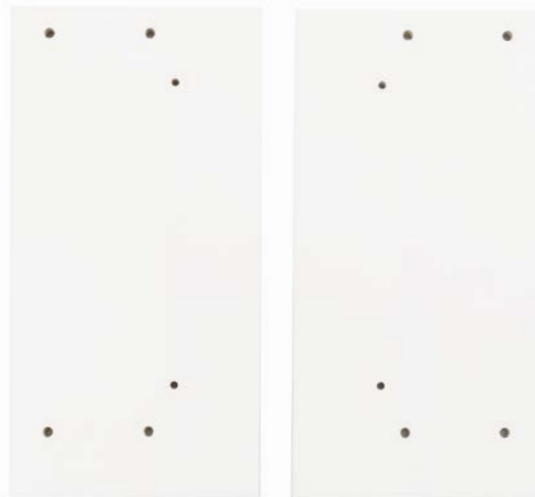


4x  
 SCHR. 321

18



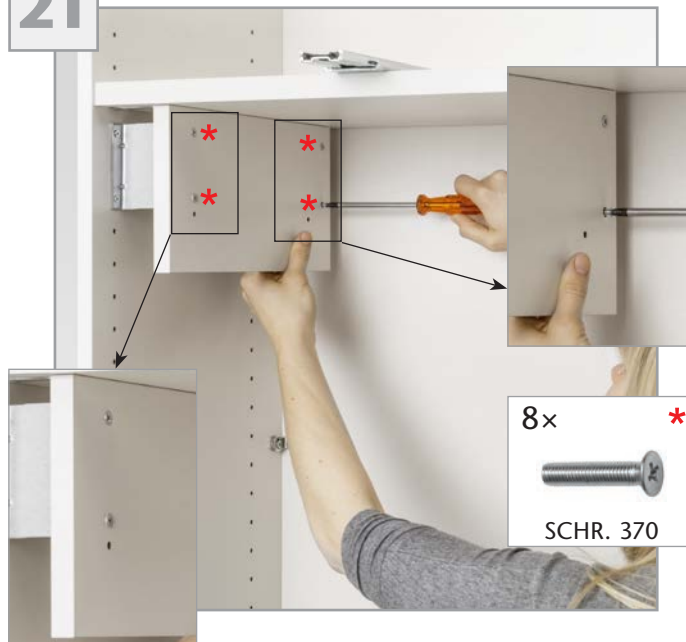
19



20



21



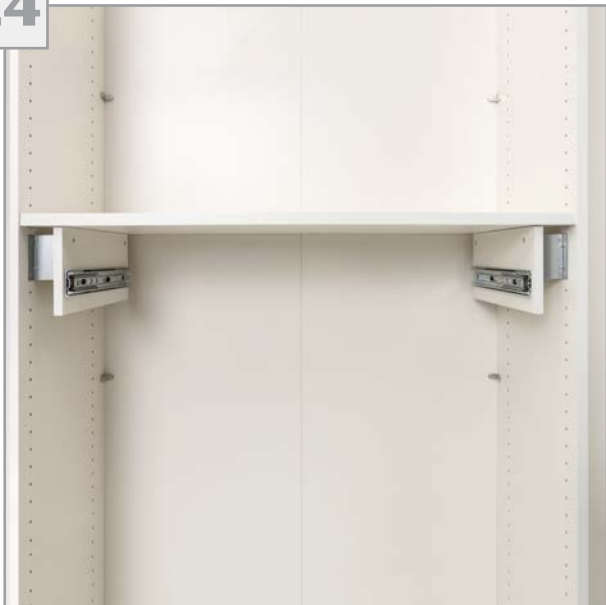
22



23



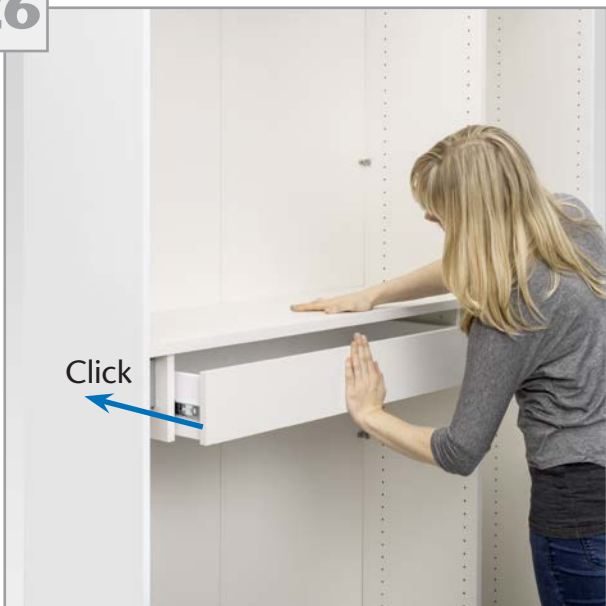
24



25



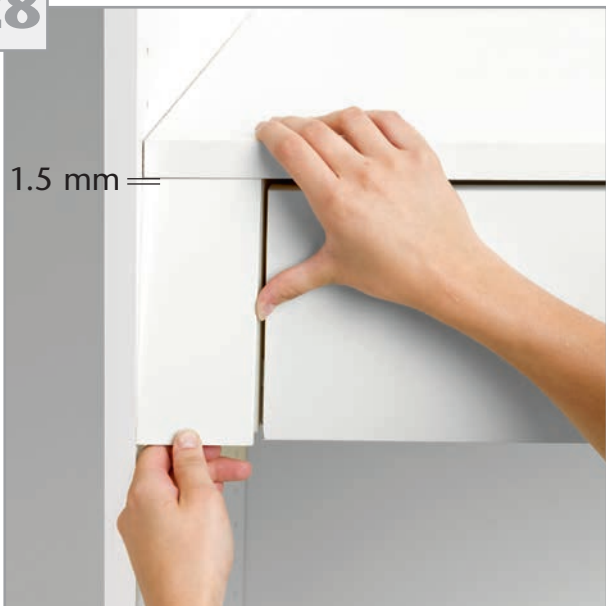
26



27



28



29

