

Care Instructions -

1. Ensure guy ropes are out at all times during use
2. Never pack your tent away wet. If you must take your tent down when wet, ensure that it is dried completely as soon as possible to prevent mildew forming
3. If mildew does form on your tent, wash off with warm water and a soft brush to prevent further growth, do not use soap or detergents
4. Do not use an open flame inside your tent. The fabric has been treated with a fire retardant but is in no way fire proof
5. Clean all pegs and poles before storing
6. This tent is not designed to withstand storm conditions. During strong winds, it is recommended that the tent be taken down
7. Do not leave your tent pitched unnecessarily for extended periods of time, UV light damages the fly and will shorten the life of your tent

Condensation -

It is important that lower vents are opened at all times to reduce the risk of condensation. During humid or damp conditions, it is recommended that inner door covers are opened to expose the mesh layer to allow additional airflow throughout your tent.

Do not use foam swabs or non bonded mats directly on the tent floor. This will cause condensation between the mat and floor and if not dried out can lead to mildew foaming.

2 Year Tent Guarantee -

Please take time to read about the protections we offer you

All our tents come with a guarantee designed to protect you as our valued customer. Flow Imports Ltd, the makers of Zempire Camping Equipment tents, will repair or replace this tent, at their discretion should it fail due to faulty materials or manufacture for a period of 2 years from the date of sale.

The Guarantee is subject to the following conditions:

1. The Guarantee only applies to an original purchaser who purchased this tent from an approved retail outlet
2. The Guarantee does not apply if the tent has been used for anything other than reasonable personal camping use. Commercial use (e.g. rental) or continuous use as a residence are expressly excluded
3. Damage due to normal wear and tear, accident, acts of God, negligence (other than by Flow Imports Ltd), failure by the purchaser to ensure instructions for setting up and care are observed, deterioration due to abnormal exposure to ultraviolet light, insect or mildew attack, or any other cause reasonably beyond the control of Flow Imports Ltd are not covered
4. If redress is sought under the terms of this Guarantee, then the tent must be returned by the purchaser to the outlet from where it was purchased within the Guarantee period, in a clean, dry state and with proof of purchase
5. All transport costs and any other indirect costs are excluded from the Guarantee.
6. Flow Imports Ltd reserves the right to make a reasonable charge for repairs which it determines are not within the scope of the Guarantee
7. The Guarantee does not limit, modify or exclude any rights under any law if doing so would contravene that law or make any part of this Guarantee invalid. However, Flow Imports Ltd:
 - a) excludes (to the extent permitted by applicable law) all conditions and warranties that might otherwise be implied; and
 - b) limits its liability for breach of any such condition or Guarantee that it cannot exclude together with its liability under the Guarantee, to repairing or replacing the Goods or paying the cost of having the Goods repaired or replaced (at Flow Imports' option).

This tent has been made with meticulous care and attention to detail. Providing it's properly looked after and correctly stored, it will help you enjoy all that nature has to offer for years to come.

Get out more - you owe it to yourself.

For a detailed description of all the features and specifications of this product please visit our website.

WWW.ZEMPIRECAMPING.COM

AEROBASE 3

zempire CAMPING EQUIPMENT SHELTER SERIES



1 Test run

Practice pitching your shelter at home to ensure you understand the process

2 Siting

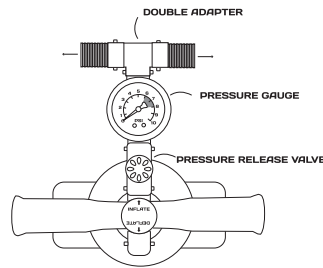
When finding a site for your shelter, try to find an area that is sheltered, flat, and free from sharp objects. Try not to pitch your shelter under trees as falling branches can damage the tent and falling sap can damage the fabric

3 Unpacking

When you take your Shelter out for the first time take a moment to see how it is packed or take a photo on your phone. This will help you when it comes to packing your tent away. Separate and identify the different parts. The package should include the following

- Shelter Canopy
- 4 Fiberglass Pole Lengths
- Guy Ropes (Pre-attached)
- Additional guy ropes
- Zip on Deluxe Wall
- Pump
- Pressure release valve
- Pressure gauge
- Pegs

Assemble the Fiberglass pole lengths. The sections are joined together with shock cord so they just need slotting together. Ensure that the sections do not snap together and each section inserts fully into the adjoining pole



4 Pump Setup

Your Zempire ® double action pump includes a pressure gauge and pressure release valve to ensure that the poles are inflated to the correct level. A double adapter is also included that allows two poles to be inflated simultaneously. The pump accessories should be assembled in the following configuration:

5 Layout

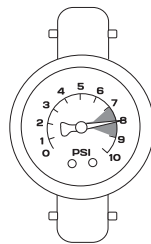
Unroll the shelter and ensure that all webbing straps are connected to the steel “o” rings at the base of each pole length. There should be 4 webbing straps connected to each pole forming a square and one webbing length running diagonally across the center. Tension each corner so that all webbing lengths are taught. It is important that the shelter is not skewed, as this will make attaching the walls difficult. Peg each corner. Pegs should be angled away from your tent at 45°

6 Valve attachment

The external inflation valve is located under the rain sock on one corner of the shelter. Before inflating, the valve will need to be attached to the pole opening. Remove the valve cap and screw in the remaining section into the pole opening. It is important that the valve is not cross-threaded and is screwed firmly.

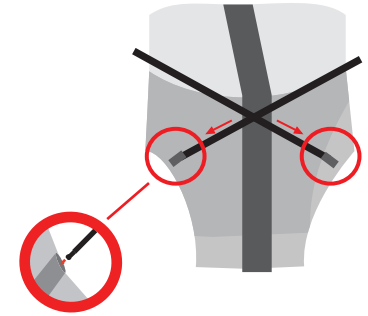
7 Inflation

Inflate the main cross tube to between 7 and 9 PSI. The pressure release valve will “honk” when 9 PSI is reached. It is important not to over inflate the tubes. It is recommended that during very hot weather 7 PSI is used to provide room for expansion during the day. In cooler or windier conditions 9 PSI is recommended. As the pole inflates it may be necessary to support the center of the pole until they assume its correct shape. It is also a good time to ensure that the base of each pole is sitting correctly on the Velcro patches. Poles can sometimes move off the Velcro during the pitching process.



8 Support Poles

Insert the end of one length of fiberglass pole into the small grey webbing pocket found halfway up the side of each door. Letting the pole bow downwards, insert the other end into the pocket on the opposite of the shelter. Lift the pole upwards so that it aligns the seam running above each door. Attach Velcro. Repeat with remaining 3 poles. Note that the poles should cross over one another as below.



9 Pegging

Peg the remaining peg loops on each side of the pole. These panels should sit at right angles to each other following the line of the webbing. Durable steel pegs are included with your tent, which will be suitable for the majority of conditions. However, if you are camped at a rocky or loose sandy location it may pay to purchase more specialized pegs. A range of specialized Zempire ® pegs are available from your local dealer.

10 Webbing Straps

Now the shelter is fully erected the webbing straps can be detached from one end and folded into the mesh pocket found at the sewn end to prevent them becoming a tripping hazard. The straps are not completely detachable as to ensure they do not get misplaced. It is important to reconnect these webbing straps before deflating your shelter.

11 Anchor Guys

It is important that the anchor guys attached to the end of each Fiberglass pole lines are guyed out at all times. Do not over tension as this can distort the pole shape and reduce stability. 4 yellow sand pegs are included with your shelter and can be used for the anchor guys in softer or sandy conditions.

12 Zip On Wall

Your shelter includes one zip on wall. When attaching the wall it may be necessary to re-peg the corner peg points to ensure the wall is not over tensioned. Too much tension can damage zips. It may also be helpful to leave the wall attached when packing the shelter to ensure the correct tension is applied when setting up again. The wall zipper has twin zip pullers to allow either side of the wall to be rolled back as a door.

Deflation

- Remove the support poles from each side of the shelter and place in pole bag
- Unpeg all guy ropes and roll up to ensure they do not get tangled during packing
- Unpeg the peg points excluding the 4 corners. Clean and dry pegs before storing in the bag
- Open the valve on the main pole. Wait for all the air to be expelled
- Unpeg the 4 corners of the tent, clean and pack the pegs
- Role each pole end excluding the valve end to expel the remaining air, then unroll
- Turn shelter upside down.
- Fold Legs into center
- Lay the carry bag at one end of the shelter. Fold the tent to 2/3s of the length of the bag.
- Place the Pole, Pump, and Peg bags on top of the folded shelter
- Roll tightly
- Using the webbing straps tension the shelter.
- Place in carry bag and tension

UV Degradation

Shelter fabrics can be weakened from prolonged exposure to sunlight. Under normal holiday use your Zempire ® shelter will give you many years of camping enjoyment, but use in extended periods of strong sunlight will cause degradation. UV Degradation is not covered under warranty. The warranty does not cover permanent sites, displays or for commercial purposes.